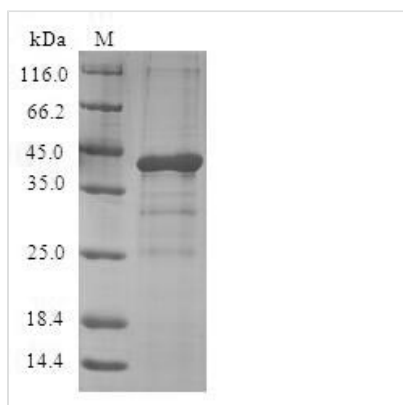




Recombinant Human Appetite-regulating hormone (GHRL)

Product Code	CSB-EP871388HU
Relevance	Ghrelin is the ligand for growth hormone secretagogue receptor type 1 (GHSR). Induces the release of growth hormone from the pituitary. Has an appetite-stimulating effect, induces adiposity and stimulates gastric acid secretion. Involved in growth regulation. Obestatin may be the ligand for GPR39. May have an appetite-reducing effect resulting in decreased food intake. May reduce gastric emptying activity and jejunal motility
Abbreviation	Recombinant Human GHRL protein
Storage	The shelf life is related to many factors, storage state, buffer ingredients, storage temperature and the stability of the protein itself. Generally, the shelf life of liquid form is 6 months at -20°C/-80°C. The shelf life of lyophilized form is 12 months at -20°C/-80°C.
Uniprot No.	Q9UBU3
Alias	Growth hormone secretagogue Growth hormone-releasing peptide Motilin-related peptide Protein M46
Product Type	Recombinant Protein
Immunogen Species	Homo sapiens (Human)
Purity	Greater than 90% as determined by SDS-PAGE.
Sequence	MPSPGTVCSLLLLGMLWLDLAMAGSSFLSPEHQRVQQRKESKKPPAKLQPRA LAGWLRPEDGGQAEGAEDEMEVRFNAPFDVGIKLSGVQYQQHSQALGKFLQ DILWEEAKEAPADK
Research Area	Cardiovascular
Source	E.coli
Target Names	GHRL
Protein Names	Recommended name: Appetite-regulating hormone Alternative name(s): Growth hormone secretagogue Growth hormone-releasing peptide Motilin-related peptide Protein M46 Cleaved into the following 3 chains: 1. Ghrelin-27 2. Ghrelin-28 Shor
Expression Region	1-117aa
Notes	Repeated freezing and thawing is not recommended. Store working aliquots at 4°C for up to one week.
Tag Info	N-terminal GST-tagged
Mol. Weight	39.9kDa
Protein Length	Full Length of BC025791
Image	



(Tris-Glycine gel) Discontinuous SDS-PAGE (reduced) with 5% enrichment gel and 15% separation gel.

Reconstitution

We recommend that this vial be briefly centrifuged prior to opening to bring the contents to the bottom. Please reconstitute protein in deionized sterile water to a concentration of 0.1-1.0 mg/mL. We recommend to add 5-50% of glycerol (final concentration) and aliquot for long-term storage at -20°C/-80°C. Our default final concentration of glycerol is 50%. Customers could use it as reference.

Shelf Life

The shelf life is related to many factors, storage state, buffer ingredients, storage temperature and the stability of the protein itself. Generally, the shelf life of liquid form is 6 months at -20°C/-80°C. The shelf life of lyophilized form is 12 months at -20°C/-80°C.