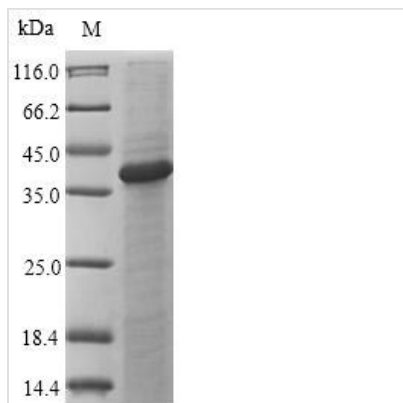




Recombinant Mouse C-type lectin domain family 4 member A (Clec4a), partial

Product Code	CSB-EP874136MO
Relevance	May be involved in regulating immune reactivity. May play a role in modulating dendritic cells (DC) differentiation and/or maturation. May be involved in the inhibition of B-cell-receptor-mediated calcium mobilization and protein tyrosine phosphorylation.
Abbreviation	Recombinant Mouse Clec4a protein, partial
Storage	The shelf life is related to many factors, storage state, buffer ingredients, storage temperature and the stability of the protein itself. Generally, the shelf life of liquid form is 6 months at -20°C/-80°C. The shelf life of lyophilized form is 12 months at -20°C/-80°C.
Uniprot No.	Q9QZ15
Alias	C-type lectin superfamily member 6 Dendritic cell immunoreceptor
Product Type	Recombinant Protein
Immunogen Species	Mus musculus (Mouse)
Purity	Greater than 90% as determined by SDS-PAGE.
Sequence	QKYSQLLEEKKAANKNIMHNELNCTKSVSPMEDKVVSCCPKDWRLFSGSHCYLV PTVSSASWNKSEENC SRMG AHLVVIQS QEEQDFITGILDTHAAYFIGLWDTG HRQWQWVDQTPYEESITFWHNGEPSSGNEKCATIIRWKTGWGWNDISCSL KQKSVCQMKKINL
Research Area	Immunology
Source	E.coli
Target Names	Clec4a
Expression Region	70-238aa
Notes	Repeated freezing and thawing is not recommended. Store working aliquots at 4°C for up to one week.
Tag Info	N-terminal 10xHis-SUMO-tagged and C-terminal Myc-tagged
Mol. Weight	39.6kDa
Protein Length	Extracellular Domain
Image	



(Tris-Glycine gel) Discontinuous SDS-PAGE (reduced) with 5% enrichment gel and 15% separation gel.

Reconstitution

We recommend that this vial be briefly centrifuged prior to opening to bring the contents to the bottom. Please reconstitute protein in deionized sterile water to a concentration of 0.1-1.0 mg/mL. We recommend to add 5-50% of glycerol (final concentration) and aliquot for long-term storage at $-20^{\circ}\text{C}/-80^{\circ}\text{C}$. Our default final concentration of glycerol is 50%. Customers could use it as reference.

Shelf Life

The shelf life is related to many factors, storage state, buffer ingredients, storage temperature and the stability of the protein itself. Generally, the shelf life of liquid form is 6 months at $-20^{\circ}\text{C}/-80^{\circ}\text{C}$. The shelf life of lyophilized form is 12 months at $-20^{\circ}\text{C}/-80^{\circ}\text{C}$.