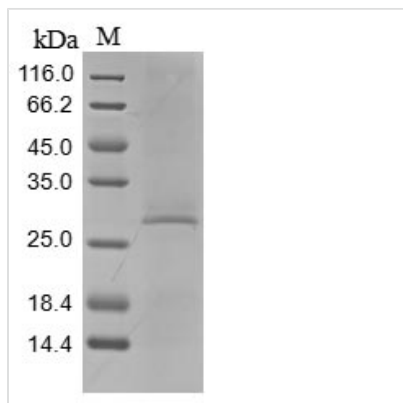




Recombinant Mouse Complement C1q tumor necrosis factor-related protein 3 (C1qtnf3)

Product Code	CSB-BP875360MO
Abbreviation	Recombinant Mouse C1qtnf3 protein
Storage	The shelf life is related to many factors, storage state, buffer ingredients, storage temperature and the stability of the protein itself. Generally, the shelf life of liquid form is 6 months at -20°C/-80°C. The shelf life of lyophilized form is 12 months at -20°C/-80°C.
Uniprot No.	Q9ES30
Product Type	Recombinant Protein
Immunogen Species	Mus musculus (Mouse)
Purity	≥ 85% as determined by SDS-PAGE.
Sequence	QDEYMESPQAGGLPPDCSKCCHGDYGFRGYQGPPGPPGPPGIPGNHGNNG NNGATGHEGAKGEKGDKGDLDGPRGERGQHGPKEKGYPGVPELQIAFMAS LATHFSNQNSGIISSVETNIGNFFDVMTRFGAPVSGVYFFTFSSMMKHEDVE EVYVYLMHNGNTVFSMYSYETKKGKSDTSSNHAVLKLAKGDEVWLRMGNGAL HGDHQRFFSTFAGFLLFETK
Research Area	Metabolism
Source	Baculovirus
Target Names	C1qtnf3
Protein Names	Collagenous repeat-containing sequence 26 kDa protein Short name:CORS26 Secretory protein CORS26 Ctrp3
Expression Region	23-246aa
Notes	Repeated freezing and thawing is not recommended. Store working aliquots at 4°C for up to one week.
Tag Info	N-terminal 10xHis-tagged
Mol. Weight	26.6 kDa
Protein Length	Full Length of Mature Protein

Image



(Tris-Glycine gel) Discontinuous SDS-PAGE (reduced) with 5% enrichment gel and 15% separation gel.

Reconstitution

We recommend that this vial be briefly centrifuged prior to opening to bring the contents to the bottom. Please reconstitute protein in deionized sterile water to a concentration of 0.1-1.0 mg/mL. We recommend to add 5-50% of glycerol (final concentration) and aliquot for long-term storage at -20°C/-80°C. Our default final concentration of glycerol is 50%. Customers could use it as reference.

Shelf Life

The shelf life is related to many factors, storage state, buffer ingredients, storage temperature and the stability of the protein itself. Generally, the shelf life of liquid form is 6 months at -20°C/-80°C. The shelf life of lyophilized form is 12 months at -20°C/-80°C.