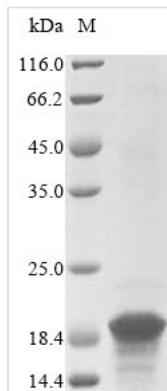




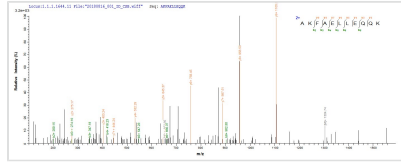
Recombinant Trypanosoma cruzi Kinetoplastid membrane protein 11 (KMP-11)

Product Code	CSB-EP880045TQY
Abbreviation	Recombinant Trypanosoma cruzi KMP-11 protein
Storage	The shelf life is related to many factors, storage state, buffer ingredients, storage temperature and the stability of the protein itself. Generally, the shelf life of liquid form is 6 months at -20°C/-80°C. The shelf life of lyophilized form is 12 months at -20°C/-80°C.
Uniprot No.	Q9U6Z1
Product Type	Recombinant Protein
Immunogen Species	Trypanosoma cruzi
Purity	Greater than 85% as determined by SDS-PAGE.
Sequence	MATLLEEFSAKLDRLDAEFAKKMEEQNKKFFADKPDESTLSPEMKEHYEKFEK MIQEHTDKFNKKMHEHSEHFKAKFAELLEQQKNAQFP GK
Research Area	Microbiology
Source	E.coli
Target Names	KMP-11
Protein Names	Recommended name: Kinetoplastid membrane protein 11 Short name= KMP-11
Expression Region	1-92aa
Notes	Repeated freezing and thawing is not recommended. Store working aliquots at 4°C for up to one week.
Tag Info	N-terminal 10xHis-tagged and C-terminal Myc-tagged
Mol. Weight	18.0 kDa
Protein Length	Full Length

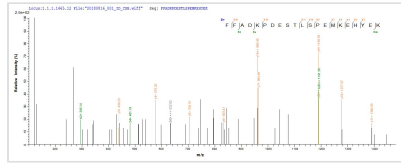
Image



(Tris-Glycine gel) Discontinuous SDS-PAGE (reduced) with 5% enrichment gel and 15% separation gel.



Based on the SEQUEST from database of E.coli host and target protein, the LC-MS/MS Analysis result of CSB-EP880045TQY could indicate that this peptide derived from E.coli-expressed *Trypanosoma cruzi* KMP-11.



Based on the SEQUEST from database of E.coli host and target protein, the LC-MS/MS Analysis result of CSB-EP880045TQY could indicate that this peptide derived from E.coli-expressed *Trypanosoma cruzi* KMP-11.

Reconstitution

We recommend that this vial be briefly centrifuged prior to opening to bring the contents to the bottom. Please reconstitute protein in deionized sterile water to a concentration of 0.1-1.0 mg/mL. We recommend to add 5-50% of glycerol (final concentration) and aliquot for long-term storage at -20°C/-80°C. Our default final concentration of glycerol is 50%. Customers could use it as reference.

Shelf Life

The shelf life is related to many factors, storage state, buffer ingredients, storage temperature and the stability of the protein itself.

Generally, the shelf life of liquid form is 6 months at -20°C/-80°C. The shelf life of lyophilized form is 12 months at -20°C/-80°C.