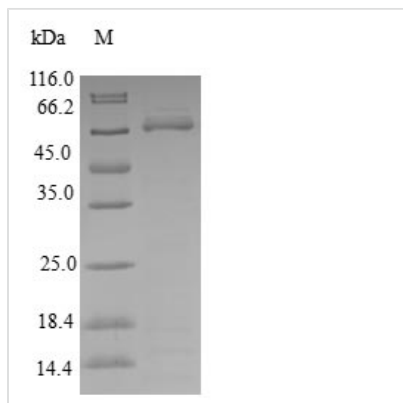




Recombinant Human Kinetochore-associated protein DSN1 homolog (DSN1)

Product Code	CSB-EP880969HU
Relevance	Part of the MIS12 complex which is required for normal chromosome alignment and segregation and kinetochore formation during mitosis.
Abbreviation	Recombinant Human DSN1 protein
Storage	The shelf life is related to many factors, storage state, buffer ingredients, storage temperature and the stability of the protein itself. Generally, the shelf life of liquid form is 6 months at -20°C/-80°C. The shelf life of lyophilized form is 12 months at -20°C/-80°C.
Uniprot No.	Q9H410
Product Type	Recombinant Protein
Immunogen Species	Homo sapiens (Human)
Purity	≥ 90% as determined by SDS-PAGE.
Sequence	MTSVTRSEIIDEKGPVMSKTHDHLQLESSLSPVEVFAKTSASLEMNQGVSEERI HLGSSPKKGGNCDLSHQERLQSKSLHLSPQEQSASYQDRRQSWRRASMKET NRRKSLHPIHQGITELSRISVDLAESKRLGCLLLSSFQFSIQKLEPFLRDTKGF SLESFRAKASSLSEELKHFADGLETDLQKCFEDSNGKASDFSLEASVAEMK EYITKFSLERQTDWQLLLHYQQEAKEILSRGSTEAKITEVKVEPMTYLGSSQNE VLNTKPDYQKILQNQSKVFDCMELVMDELQGSVKQLQAFMDESTQCFQKVS QLGKRSMQQLDPSARKLLKLQNPPIHGS GSGSCQ
Research Area	Cell Biology
Source	E.coli
Target Names	DSN1
Protein Names	Recommended name: Kinetochore-associated protein DSN1 homolog
Expression Region	1-356aa
Notes	Repeated freezing and thawing is not recommended. Store working aliquots at 4°C for up to one week.
Tag Info	N-terminal GST-tagged
Mol. Weight	67.1kDa
Protein Length	Full Length
Image	



(Tris-Glycine gel) Discontinuous SDS-PAGE (reduced) with 5% enrichment gel and 15% separation gel.

Reconstitution

We recommend that this vial be briefly centrifuged prior to opening to bring the contents to the bottom. Please reconstitute protein in deionized sterile water to a concentration of 0.1-1.0 mg/mL. We recommend to add 5-50% of glycerol (final concentration) and aliquot for long-term storage at -20°C/-80°C. Our default final concentration of glycerol is 50%. Customers could use it as reference.

Shelf Life

The shelf life is related to many factors, storage state, buffer ingredients, storage temperature and the stability of the protein itself. Generally, the shelf life of liquid form is 6 months at -20°C/-80°C. The shelf life of lyophilized form is 12 months at -20°C/-80°C.