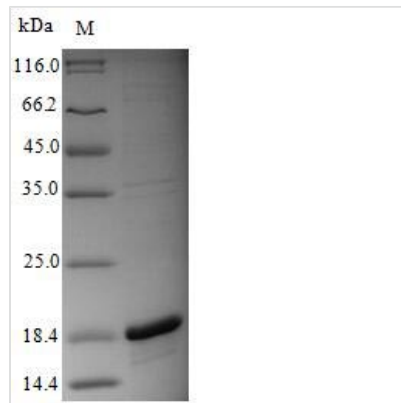


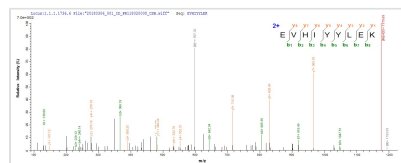


Recombinant Influenza A virus Polymerase acidic protein (PA), partial

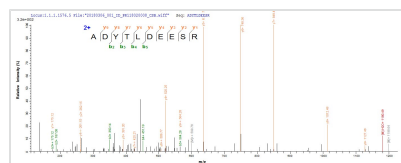
Product Code	CSB-EP881268IIO
Relevance	Plays an essential role in viral RNA transcription and replication by forming the heterotrimeric polymerase complex together with PB1 and PB2 subunits. The complex transcribes viral mRNAs by using a unique mechanism called cap-snatching. It consists in the hijacking and cleavage of host capped pre-mRNAs. These short capped RNAs are then used as primers for viral mRNAs. The PB2 subunit is responsible for the binding of the 5' cap of cellular pre-mRNAs which are subsequently cleaved after 10-13 nucleotides by the PA subunit that carries the endonuclease activity.
Abbreviation	Recombinant Influenza A virus Polymerase acidic protein, partial
Storage	The shelf life is related to many factors, storage state, buffer ingredients, storage temperature and the stability of the protein itself. Generally, the shelf life of liquid form is 6 months at -20°C/-80°C. The shelf life of lyophilized form is 12 months at -20°C/-80°C.
Uniprot No.	Q9IQ47
Alias	RNA-directed RNA polymerase subunit P2
Product Type	Recombinant Protein
Immunogen Species	Influenza A virus (strain A/x-31 H3N2)
Purity	Greater than 90% as determined by SDS-PAGE.
Sequence	RREVHIYYLEKANKIKSEKTHIHIFSFTGEEMATKADYTLDEESRARIKTRLFTIR QEMASRGLWDSFRQSERGEETIEERFEITGTMRKLADQSLPPNFSSLENFRAY VDGFEPNGYIEGKLS
Research Area	others
Source	E.coli
Target Names	PA
Protein Names	Recommended name: Polymerase acidic protein Alternative name(s): RNA-directed RNA polymerase subunit P2
Expression Region	124-247aa
Notes	Repeated freezing and thawing is not recommended. Store working aliquots at 4°C for up to one week.
Tag Info	N-terminal 6xHis-tagged
Mol. Weight	18.6kDa
Protein Length	Partial
Image	



(Tris-Glycine gel) Discontinuous SDS-PAGE (reduced) with 5% enrichment gel and 15% separation gel.



Based on the SEQUEST from database of E.coli host and target protein, the LC-MS/MS Analysis result of CSB-EP881268IIO could indicate that this peptide derived from E.coli-expressed Influenza A virus (strain A/x-31 H3N2) PA.



Based on the SEQUEST from database of E.coli host and target protein, the LC-MS/MS Analysis result of CSB-EP881268IIO could indicate that this peptide derived from E.coli-expressed Influenza A virus (strain A/x-31 H3N2) PA.

Reconstitution

We recommend that this vial be briefly centrifuged prior to opening to bring the contents to the bottom. Please reconstitute protein in deionized sterile water to a concentration of 0.1-1.0 mg/mL. We recommend to add 5-50% of glycerol (final concentration) and aliquot for long-term storage at -20°C/-80°C. Our default final concentration of glycerol is 50%. Customers could use it as reference.

Shelf Life

The shelf life is related to many factors, storage state, buffer ingredients, storage temperature and the stability of the protein itself. Generally, the shelf life of liquid form is 6 months at -20°C/-80°C. The shelf life of lyophilized form is 12 months at -20°C/-80°C.