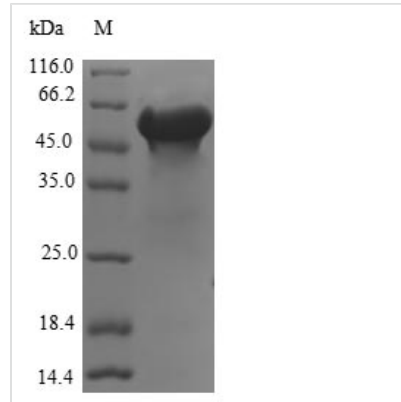




Recombinant Human FK506-binding protein-like (FKBPL)

Product Code	CSB-EP883441HU
Relevance	May be involved in response to X-ray. Regulates p21 protein stability by binding to Hsp90 and p21.
Abbreviation	Recombinant Human FKBPL protein
Storage	The shelf life is related to many factors, storage state, buffer ingredients, storage temperature and the stability of the protein itself. Generally, the shelf life of liquid form is 6 months at -20°C/-80°C. The shelf life of lyophilized form is 12 months at -20°C/-80°C.
Uniprot No.	Q9UIM3
Alias	WAF-1/CIP1 stabilizing protein 39
Product Type	Recombinant Protein
Immunogen Species	Homo sapiens (Human)
Purity	≥ 90% as determined by SDS-PAGE.
Sequence	METPPVNTIGEKDTSQPQQEWEKLNRENLDVSIQIRQQPRDPPTETLELEVSP DPASQILEHTQGAEKLVAELEGDSHKSHGSTSQMPEALQASDLWYCPDGSFV KKIVIRGHGLDKPKLGSCCRVLALGFPPGSGPPEGWTELTMGVGPWREETWG ELIEKCLESQCQGEAEELQLPGHSGPPVRLTLASFTQGRDSWELETSEKEALA REERARGTELFRAKNPEGAARCYGRALRLLLTLPPPGLPERTVLHANLAACQL LLGQPQLAAQSCDRVLEREPGHLKALYRRGVAQAALGNLEKATADLKKVLAID PKNRAAQEELGKVVIQGNQDAGLAQGLRKMFG
Research Area	Cell Biology
Source	E.coli
Target Names	FKBPL
Protein Names	Recommended name: FK506-binding protein-like Alternative name(s): WAF-1/CIP1 stabilizing protein 39 Short name= WISp39
Expression Region	1-349aa
Notes	Repeated freezing and thawing is not recommended. Store working aliquots at 4°C for up to one week.
Tag Info	N-terminal GST-tagged
Mol. Weight	65.2kDa
Protein Length	Full Length
Image	



(Tris-Glycine gel) Discontinuous SDS-PAGE (reduced) with 5% enrichment gel and 15% separation gel.

Reconstitution

We recommend that this vial be briefly centrifuged prior to opening to bring the contents to the bottom. Please reconstitute protein in deionized sterile water to a concentration of 0.1-1.0 mg/mL. We recommend to add 5-50% of glycerol (final concentration) and aliquot for long-term storage at -20°C/-80°C. Our default final concentration of glycerol is 50%. Customers could use it as reference.

Shelf Life

The shelf life is related to many factors, storage state, buffer ingredients, storage temperature and the stability of the protein itself. Generally, the shelf life of liquid form is 6 months at -20°C/-80°C. The shelf life of lyophilized form is 12 months at -20°C/-80°C.