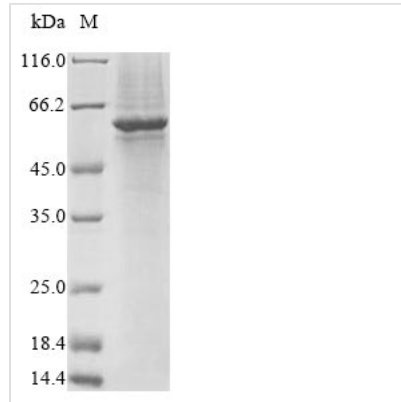




Recombinant Human Gasdermin-C (GSDMC)

Product Code	CSB-BP883633HU
Abbreviation	Recombinant Human GSDMC protein
Storage	The shelf life is related to many factors, storage state, buffer ingredients, storage temperature and the stability of the protein itself. Generally, the shelf life of liquid form is 6 months at -20°C/-80°C. The shelf life of lyophilized form is 12 months at -20°C/-80°C.
Uniprot No.	Q9BYG8
Product Type	Recombinant Protein
Immunogen Species	Homo sapiens (Human)
Purity	≥ 85% as determined by SDS-PAGE.
Sequence	MPSMLERISKNLVKEIGSKDLTPVKYLLSATKLRQFVILRKKKDSRSSFWEQSD YVPVEFSLNDILEPSSSVLETVVTGPFHFSDIMIQLKHKADMGVNVGIEVSVSGE ASVDHGCSLEFQIVTIPSPNLEDFQKRKLLDPEPSFLKECRRRGDNLVYVTEAV ELINNTVLYDSSSVNILGKIALWITYGKGQQGQGESLRVKKKALTLQKGMVMAYK RKQLVIKEKAILISDDDEQRTFQDEYEISEMVGCAARSEGLLPSFHTISPTLFN ASSNDMCLKPELFLTQQFLSGHLPKYEQVHILPVGRIEFPWQNFKHLQEEVF QKIKTLAQLSKDVQDVMFYLSILAMLRDRGALQDLNMNMLELDSSGHLDGPGGAI LKKLQQDSNHAWFNPKDPILYLLEAIMVLSDFQHDLLACSMKRILLQQQELVR SILEPNFRYPWSIPFTLPELLAPLQSEGLAITYGLLEECGLRMELDNPRSTWD VEAKMPLSALYGTLSELLQLAEA
Research Area	Cancer
Source	Baculovirus
Target Names	GSDMC
Protein Names	Melanoma-derived leucine zipper-containing extranuclear factor
Expression Region	1-508aa
Notes	Repeated freezing and thawing is not recommended. Store working aliquots at 4°C for up to one week.
Tag Info	N-terminal 10xHis-tagged and C-terminal Myc-tagged
Mol. Weight	61.7 kDa
Protein Length	Full Length
Image	



(Tris-Glycine gel) Discontinuous SDS-PAGE (reduced) with 5% enrichment gel and 15% separation gel.

Reconstitution

We recommend that this vial be briefly centrifuged prior to opening to bring the contents to the bottom. Please reconstitute protein in deionized sterile water to a concentration of 0.1-1.0 mg/mL. We recommend to add 5-50% of glycerol (final concentration) and aliquot for long-term storage at -20°C/-80°C. Our default final concentration of glycerol is 50%. Customers could use it as reference.

Shelf Life

The shelf life is related to many factors, storage state, buffer ingredients, storage temperature and the stability of the protein itself. Generally, the shelf life of liquid form is 6 months at -20°C/-80°C. The shelf life of lyophilized form is 12 months at -20°C/-80°C.