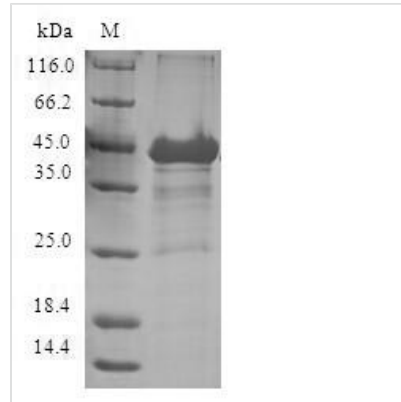




Recombinant Human Cytosolic beta-glucosidase (GBA3)

Product Code	CSB-EP884446HU
Relevance	Glycosidase probably involved in the intestinal absorption and metabolism of dietary flavonoid glycosides. Able to hydrolyze a broad variety of glycosides including phytoestrogens, flavonols, flavones, flavanones and cyanogens. Possesses beta-glycosylceramidase activity and may be involved in a nonlysosomal catabolic pathway of glycosylceramide.
Abbreviation	Recombinant Human GBA3 protein
Storage	The shelf life is related to many factors, storage state, buffer ingredients, storage temperature and the stability of the protein itself. Generally, the shelf life of liquid form is 6 months at -20°C/-80°C. The shelf life of lyophilized form is 12 months at -20°C/-80°C.
Uniprot No.	Q9H227
Alias	Cytosolic beta-glucosidase-like protein 1
Product Type	Recombinant Protein
Immunogen Species	Homo sapiens (Human)
Purity	Greater than 90% as determined by SDS-PAGE.
Sequence	MAFPAGFGWAAATAAYQVEGGWDADGKGPCVWDTFTHQGGERVFKNQTG DVACGSYTLWEEDLKCIKQLGLTHYRFSLSWSRLLPDGTTGFINQKAIQLDKVN LQVYCAWSLLDNFEWNQGYSSRFGFLFHVDFEDPARPRVPYPSAKEYAKIIRNN GLEAHL
Research Area	Signal Transduction
Source	E.coli
Target Names	GBA3
Protein Names	Recommended name: Cytosolic beta-glucosidase EC= 3.2.1.21 Alternative name(s): Cytosolic beta-glucosidase-like protein 1
Expression Region	1-162aa
Notes	Repeated freezing and thawing is not recommended. Store working aliquots at 4°C for up to one week.
Tag Info	N-terminal GST-tagged
Mol. Weight	45.3kDa
Protein Length	Full Length of Isoform 2
Image	



(Tris-Glycine gel) Discontinuous SDS-PAGE (reduced) with 5% enrichment gel and 15% separation gel.

Reconstitution

We recommend that this vial be briefly centrifuged prior to opening to bring the contents to the bottom. Please reconstitute protein in deionized sterile water to a concentration of 0.1-1.0 mg/mL. We recommend to add 5-50% of glycerol (final concentration) and aliquot for long-term storage at -20°C/-80°C. Our default final concentration of glycerol is 50%. Customers could use it as reference.

Shelf Life

The shelf life is related to many factors, storage state, buffer ingredients, storage temperature and the stability of the protein itself. Generally, the shelf life of liquid form is 6 months at -20°C/-80°C. The shelf life of lyophilized form is 12 months at -20°C/-80°C.