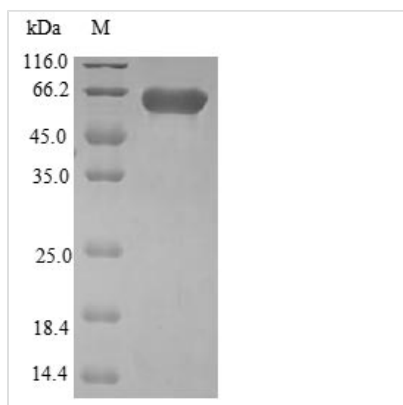




Recombinant Human Pleckstrin homology domain-containing family F member 2 (PLEKHF2)

Product Code	CSB-EP884492HU
Relevance	May play a role in early endosome fusion upstream of RAB5, hence regulating receptor trafficking and fluid-phase transport. Enhances cellular sensitivity to TNF-induced apoptosis
Abbreviation	Recombinant Human PLEKHF2 protein
Storage	The shelf life is related to many factors, storage state, buffer ingredients, storage temperature and the stability of the protein itself. Generally, the shelf life of liquid form is 6 months at -20°C/-80°C. The shelf life of lyophilized form is 12 months at -20°C/-80°C.
Uniprot No.	Q9H8W4
Alias	Endoplasmic reticulum-associated apoptosis-involved protein containing PH and FYVE domains
Product Type	Recombinant Protein
Immunogen Species	Homo sapiens (Human)
Purity	Greater than 90% as determined by SDS-PAGE.
Sequence	MVDRLANSEANTRRISIVENCFGAAGQPLTIPGRVLIGEGVLTKLCRKKPKARQ FFLFNDILVYGNIVIQKKKYNKQHIIPLNVTIDSIKDEGDLRNGWLIKTPTKSFV YAATATEKSEWMNHINKCVTDLLSKSGKTPSNEHAAVVWVPDSEATVCMRCQK AKFTPVNRHHCRKCGFVVCGPCSEKRFLPSQSSKPVIRICDFCYDLLSAGD MATCQPARDSDSYSQSLKSPLNDMSDDDDDDSSD
Research Area	Cell Biology
Source	E.coli
Target Names	PLEKHF2
Protein Names	Recommended name: Pleckstrin homology domain-containing family F member 2 Short name= PH domain-containing family F member 2 Alternative name(s): PH and FYVE domain-containing protein 2 Phafin-2 Zinc finger FYVE domain-containing pr
Expression Region	1-249aa
Notes	Repeated freezing and thawing is not recommended. Store working aliquots at 4°C for up to one week.
Tag Info	N-terminal GST-tagged
Mol. Weight	54.8kDa
Protein Length	Full Length
Image	



(Tris-Glycine gel) Discontinuous SDS-PAGE (reduced) with 5% enrichment gel and 15% separation gel.

Reconstitution

We recommend that this vial be briefly centrifuged prior to opening to bring the contents to the bottom. Please reconstitute protein in deionized sterile water to a concentration of 0.1-1.0 mg/mL. We recommend to add 5-50% of glycerol (final concentration) and aliquot for long-term storage at -20°C/-80°C. Our default final concentration of glycerol is 50%. Customers could use it as reference.

Shelf Life

The shelf life is related to many factors, storage state, buffer ingredients, storage temperature and the stability of the protein itself. Generally, the shelf life of liquid form is 6 months at -20°C/-80°C. The shelf life of lyophilized form is 12 months at -20°C/-80°C.