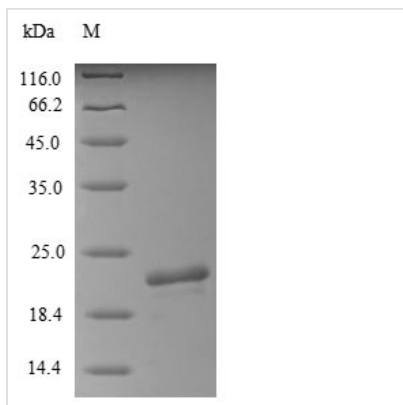


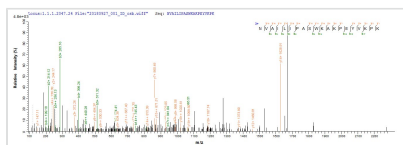


Recombinant Pig Calcium-activated chloride channel regulator 1 (CLCA1), partial

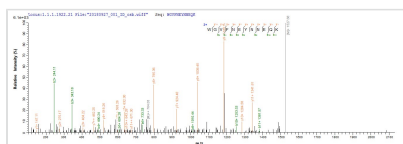
Product Code	CSB-EP886948PI
Relevance	May be involved in mediating calcium-activated chloride conductance. May play critical roles in goblet cell metaplasia, mucus hypersecretion, cystic fibrosis and AHR. May be involved in the regulation of mucus production and/or secretion by goblet cells. Involved in the regulation of tissue inflammation in the innate immune response. May play a role as a tumor suppressor. Induces MUC5AC. Induces a cAMP-dependent chloride conductance possibly through effects on CFTR in colon carcinoma cells.
Abbreviation	Recombinant Pig CLCA1 protein, partial
Storage	The shelf life is related to many factors, storage state, buffer ingredients, storage temperature and the stability of the protein itself. Generally, the shelf life of liquid form is 6 months at -20°C/-80°C. The shelf life of lyophilized form is 12 months at -20°C/-80°C.
Uniprot No.	Q9TUB5
Product Type	Recombinant Protein
Immunogen Species	Sus scrofa (Pig)
Purity	≥ 85% as determined by SDS-PAGE.
Sequence	DERLIQNIKDMVTKASPYLFEATEKRFYFKNVAILIPASWKAKPEYVVKPKLETYK NADVVTTEPNPPENDGPYTEQMGNCGEKGEKIYFTPDFVAGKKVLQYGPQG RVFVHEWAHLRWGVFNEYNNEQKFYLSNKKEQPVICSAAIRGTVNLPQ
Research Area	Signal Transduction
Source	E.coli
Target Names	CLCA1
Protein Names	Calcium-activated chloride channel family member 1 pCLCA1 AECC
Expression Region	46-199aa
Notes	Repeated freezing and thawing is not recommended. Store working aliquots at 4°C for up to one week.
Tag Info	N-terminal 10xHis-tagged and C-terminal Myc-tagged
Mol. Weight	22.8 kDa
Protein Length	Partial
Image	



(Tris-Glycine gel) Discontinuous SDS-PAGE (reduced) with 5% enrichment gel and 15% separation gel.



Based on the SEQUEST from database of E.coli host and target protein, the LC-MS/MS Analysis result of CSB-EP886948PI could indicate that this peptide derived from E.coli-expressed *Sus scrofa* (Pig) CLCA1.



Based on the SEQUEST from database of E.coli host and target protein, the LC-MS/MS Analysis result of CSB-EP886948PI could indicate that this peptide derived from E.coli-expressed *Sus scrofa* (Pig) CLCA1.

Reconstitution

We recommend that this vial be briefly centrifuged prior to opening to bring the contents to the bottom. Please reconstitute protein in deionized sterile water to a concentration of 0.1-1.0 mg/mL. We recommend to add 5-50% of glycerol (final concentration) and aliquot for long-term storage at -20°C/-80°C. Our default final concentration of glycerol is 50%. Customers could use it as reference.

Shelf Life

The shelf life is related to many factors, storage state, buffer ingredients, storage temperature and the stability of the protein itself. Generally, the shelf life of liquid form is 6 months at -20°C/-80°C. The shelf life of lyophilized form is 12 months at -20°C/-80°C.