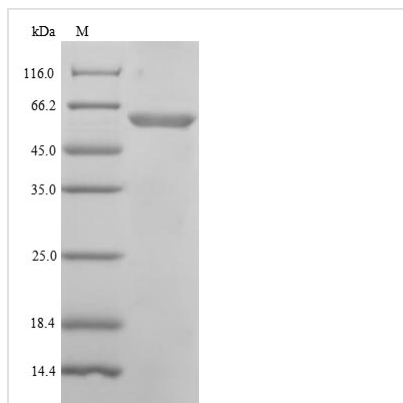




Recombinant Human DNA-directed DNA/RNA polymerase mu (POLM)

Product Code	CSB-EP889065HU
Relevance	Gap-filling polymerase involved in repair of DNA double-strand breaks by non-homologous end joining (NHEJ). Participates in immunoglobulin (Ig) light chain gene rearrangement in V(D)J recombination.
Abbreviation	Recombinant Human POLM protein
Storage	The shelf life is related to many factors, storage state, buffer ingredients, storage temperature and the stability of the protein itself. Generally, the shelf life of liquid form is 6 months at -20°C/-80°C. The shelf life of lyophilized form is 12 months at -20°C/-80°C.
Uniprot No.	Q9NP87
Product Type	Recombinant Protein
Immunogen Species	Homo sapiens (Human)
Purity	Greater than 85% as determined by SDS-PAGE.
Sequence	MLPKRRRRARVGSPSGDAASSTPPSTRFPGVAIYLVEPRMGRSRRRAFLTGLAR SKGFRVLDACSSEATHVMEETSAAEEAVSWQERRMAAAPPGCTPPALLDISW LTESLGAGQPVPVECRHRLEVAGPRKGPLSPAWMPAYACQRPTPLTHHNTGL SEALEILAEAAGFEGSEGRLLTFCRAASVLKALPSPVTTLSQLQGLPHFGEHSS RVVQELLEHGVCCEEVERVRRSERYQTMKLFTQIFGVGVKTADRWYREGLRTL DDLREQPQKLTQQQKAGLQHHQDLSTPVLRSVDALQQVVEEAVGQALPGA TVTLTGGFRRGKLQGHVDLFLITHPKEGQEAGLLPRVMCRLQDQGLILYHQH QHSCCESPTRLAQQSHMDAFERSFCIFRLPQPPGAAVGGSTRPCPSWKAVR VDLVPVVSQFPFALLGWTGSKLFQRELRRFSRKEKGLWLNHSHGLFDPEQKT FFQAASEEDIFRHLGLEYLPEQRNA
Research Area	others
Source	E.coli
Target Names	POLM
Protein Names	Terminal transferase
Expression Region	1-494aa
Notes	Repeated freezing and thawing is not recommended. Store working aliquots at 4°C for up to one week.
Tag Info	N-terminal 6xHis-tagged
Mol. Weight	58.8 kDa
Protein Length	Full Length
Image	



(Tris-Glycine gel) Discontinuous SDS-PAGE (reduced) with 5% enrichment gel and 15% separation gel.

Reconstitution

We recommend that this vial be briefly centrifuged prior to opening to bring the contents to the bottom. Please reconstitute protein in deionized sterile water to a concentration of 0.1-1.0 mg/mL. We recommend to add 5-50% of glycerol (final concentration) and aliquot for long-term storage at -20°C/-80°C. Our default final concentration of glycerol is 50%. Customers could use it as reference.

Shelf Life

The shelf life is related to many factors, storage state, buffer ingredients, storage temperature and the stability of the protein itself. Generally, the shelf life of liquid form is 6 months at -20°C/-80°C. The shelf life of lyophilized form is 12 months at -20°C/-80°C.