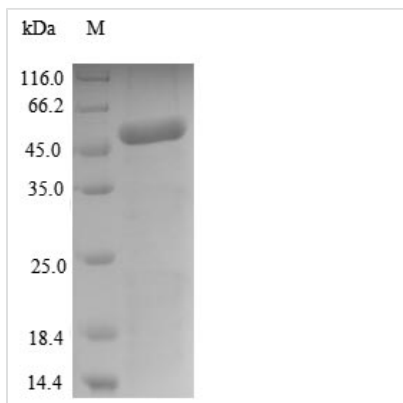




Recombinant Arabidopsis thaliana Pentatricopeptide repeat-containing protein At4g32450, mitochondrial (PCMP-H63)

Product Code	CSB-EP890450DOA
Abbreviation	Recombinant Mouse-ear cress PCMP-H63 protein
Storage	The shelf life is related to many factors, storage state, buffer ingredients, storage temperature and the stability of the protein itself. Generally, the shelf life of liquid form is 6 months at -20°C/-80°C. The shelf life of lyophilized form is 12 months at -20°C/-80°C.
Uniprot No.	Q9SUU7
Product Type	Recombinant Protein
Immunogen Species	Arabidopsis thaliana (Mouse-ear cress)
Purity	≥ 90% as determined by SDS-PAGE.
Sequence	QNWQSSDGCSSYGTGNGVQPENNTGGNHFQQDHSGHSSLDELDSICREG KVKKAVEIIKSWRNEGYYVDLPRLFWIAQLCGDAQALQEAKVVHEFITSSVGIS DISAYNSIIEMYSGCGSVEDALTVFNSMPERNLETWCGVIRCFKNGQGDAI DTFSRFKQEGNKPDGEMFKEIFFACGVLGDMNEGLLHFESMYKEYGIIPCMEH YVSLVKMLAEPGYLDEALRFVESMEPNVDLWETLMNLSRVHGDILGDRQCQD MVEQLDASRLNKESKAGLVPVKSSDLVKEKLQRMAGPNYGIRYMAAGDISR PENRELYMALKSLKEHMIEIGYVPLSKLALHDVDQESKDENLFNHNERFAFIST FLDTPARSLIRVMKNLRVCADCHNALKLMSKIVGRELISRDAKRFHHMKDGVCS CREYW
Research Area	others
Source	E.coli
Target Names	PCMP-H63
Protein Names	Recommended name: Pentatricopeptide repeat-containing protein At4g32450, mitochondrial
Expression Region	111-537aa
Notes	Repeated freezing and thawing is not recommended. Store working aliquots at 4°C for up to one week.
Tag Info	N-terminal 10xHis-tagged and C-terminal Myc-tagged
Mol. Weight	53.3kDa
Protein Length	Full Length of Mature Protein
Image	



(Tris-Glycine gel) Discontinuous SDS-PAGE (reduced) with 5% enrichment gel and 15% separation gel.

Reconstitution

We recommend that this vial be briefly centrifuged prior to opening to bring the contents to the bottom. Please reconstitute protein in deionized sterile water to a concentration of 0.1-1.0 mg/mL. We recommend to add 5-50% of glycerol (final concentration) and aliquot for long-term storage at $-20^{\circ}\text{C}/-80^{\circ}\text{C}$. Our default final concentration of glycerol is 50%. Customers could use it as reference.

Shelf Life

The shelf life is related to many factors, storage state, buffer ingredients, storage temperature and the stability of the protein itself. Generally, the shelf life of liquid form is 6 months at $-20^{\circ}\text{C}/-80^{\circ}\text{C}$. The shelf life of lyophilized form is 12 months at $-20^{\circ}\text{C}/-80^{\circ}\text{C}$.