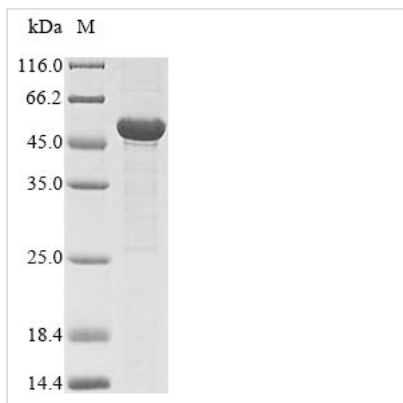


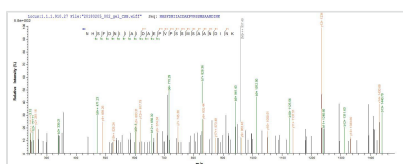


Recombinant Schizosaccharomyces pombe L-saccharopine oxidase (fap2)

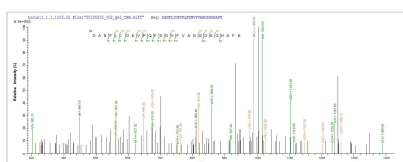
Product Code	CSB-EP892561SXV
Abbreviation	Recombinant SchizosaccharoMyces pombe fap2 protein
Storage	The shelf life is related to many factors, storage state, buffer ingredients, storage temperature and the stability of the protein itself. Generally, the shelf life of liquid form is 6 months at -20°C/-80°C. The shelf life of lyophilized form is 12 months at -20°C/-80°C.
Uniprot No.	Q9UTM9
Product Type	Recombinant Protein
Immunogen Species	Schizosaccharomyces pombe (strain 972 / ATCC 24843) (Fission yeast)
Purity	≥ 85% as determined by SDS-PAGE.
Sequence	VELAKNHSFDNIIAIDAEPVPSSMSAANDINKIVRPEYADLKYMKLALAMEKW RNDPELSSVYFECGRLSTISKDPYRARFDEVAQRNLRKLLGDSALINLSSEEI RKKYPSLFSNSPLRSDMQAVVNEHAGYANSAASLKLLELKARELGVEFVFGKA GKFKKFVVNHSETDIDKNDNHVSVQTEDGTIYHADTILLAVGAYLNAYLNTSHR VCAKGLPVAHIQLTDEEFKTYKNMPIIFDPDCAYAFPPYPVTKLIKLASTGYEYV CNVETDYDENSKVVSIPHSGPSKSSLPKYAIIQMRRFLDTFLPDLADRSLINTKM CWISDTEANFLIDKVPQFDNVFVANGDSGHAFKFLPNIGRYIAQRILGDLSEE WKDAWRWREDDKASELKWRCVRSIDYKDAEFTYDK
Research Area	Others
Source	E.coli
Target Names	fap2
Protein Names	SPAC139.04c
Expression Region	19-433aa
Notes	Repeated freezing and thawing is not recommended. Store working aliquots at 4°C for up to one week.
Tag Info	N-terminal 10xHis-tagged and C-terminal Myc-tagged
Mol. Weight	52.2 kDa
Protein Length	Full Length of Mature Protein
Image	



(Tris-Glycine gel) Discontinuous SDS-PAGE (reduced) with 5% enrichment gel and 15% separation gel.



Based on the SEQUEST from database of E.coli host and target protein, the LC-MS/MS Analysis result of CSB-EP892561SXV could indicate that this peptide derived from E.coli-expressed Schizosaccharomyces pombe (strain 972 / ATCC 24843) (Fission yeast) fap2.



Based on the SEQUEST from database of E.coli host and target protein, the LC-MS/MS Analysis result of CSB-EP892561SXV could indicate that this peptide derived from E.coli-expressed Schizosaccharomyces pombe (strain 972 / ATCC 24843) (Fission yeast) fap2.

Reconstitution

We recommend that this vial be briefly centrifuged prior to opening to bring the contents to the bottom. Please reconstitute protein in deionized sterile water to a concentration of 0.1-1.0 mg/mL. We recommend to add 5-50% of glycerol (final concentration) and aliquot for long-term storage at -20°C/-80°C. Our default final concentration of glycerol is 50%. Customers could use it as reference.

Shelf Life

The shelf life is related to many factors, storage state, buffer ingredients, storage temperature and the stability of the protein itself. Generally, the shelf life of liquid form is 6 months at -20°C/-80°C. The shelf life of lyophilized form is 12 months at -20°C/-80°C.