

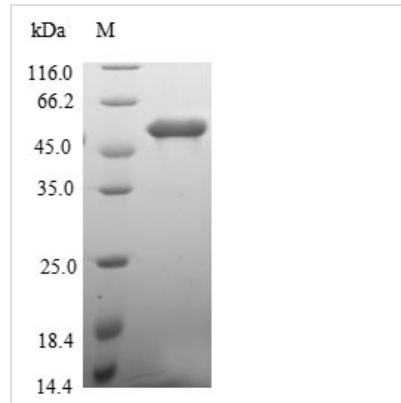


# Recombinant Human Protein MEMO1 (MEMO1)

<b>Product Code</b>	CSB-EP896500HU
<b>Relevance</b>	May control cell migration by relaying extracellular chemotactic signals to the microtubule cytoskeleton. Mediator of ERBB2 signaling. The MEMO1-RHOA-DIAPH1 signaling pathway plays an important role in ERBB2-dependent stabilization of microtubules at the cell cortex. It controls the localization of APC and CLASP2 to the cell membrane, via the regulation of GSK3B activity. In turn, membrane-bound APC allows the localization of the MACF1 to the cell membrane, which is required for microtubule capture and stabilization. Is required for breast carcinoma cell migration.
<b>Abbreviation</b>	Recombinant Human MEMO1 protein
<b>Storage</b>	The shelf life is related to many factors, storage state, buffer ingredients, storage temperature and the stability of the protein itself. Generally, the shelf life of liquid form is 6 months at -20°C/-80°C. The shelf life of lyophilized form is 12 months at -20°C/-80°C.
<b>Uniprot No.</b>	Q9Y316
<b>Alias</b>	C21orf19-like protein Hepatitis C virus NS5A-transactivated protein 7
<b>Product Type</b>	Recombinant Protein
<b>Immunogen Species</b>	Homo sapiens (Human)
<b>Purity</b>	≥ 90% as determined by SDS-PAGE.
<b>Sequence</b>	MSNRVVCREASHAGSWYTASGPQLNAQLEGWLSQVQSTKRPARAIIAPHAGY TYCGSCAAHAYKQVDPSITRRIFILGPSHHVPLSRCALSSVDIYRTPLYDLRIDQ KIYGELWKTGMFERMSLQTDDEDEHSIEMHLPYTAKAMESHKDEFTIIPVLVGL SESKEQEFGKLFKYLADPSNLFVSSDFCHWGQRFYRSYYDESQGEIYRSIE HLDKMGMSIIEQLDPVSFSNYLKKYHNTICGRHPIGVLLNAITELQKNGMNMSF SFLNYAQSSQCRNWQDSSVSYAAGALTVH
<b>Research Area</b>	Signal Transduction
<b>Source</b>	E.coli
<b>Target Names</b>	MEMO1
<b>Protein Names</b>	Recommended name: Protein MEMO1 Alternative name(s): C21orf19-like protein Hepatitis C virus NS5A-transactivated protein 7 Short name= HCV NS5A-transactivated protein 7 Mediator of ErbB2-driven cell motility 1 Short name= Mem
<b>Expression Region</b>	1-297aa
<b>Notes</b>	Repeated freezing and thawing is not recommended. Store working aliquots at 4°C for up to one week.
<b>Tag Info</b>	N-terminal GST-tagged
<b>Mol. Weight</b>	60.7kDa

**Protein Length**

Full Length

**Image**

(Tris-Glycine gel) Discontinuous SDS-PAGE (reduced) with 5% enrichment gel and 15% separation gel.

**Reconstitution**

We recommend that this vial be briefly centrifuged prior to opening to bring the contents to the bottom. Please reconstitute protein in deionized sterile water to a concentration of 0.1-1.0 mg/mL. We recommend to add 5-50% of glycerol (final concentration) and aliquot for long-term storage at -20°C/-80°C. Our default final concentration of glycerol is 50%. Customers could use it as reference.

**Shelf Life**

The shelf life is related to many factors, storage state, buffer ingredients, storage temperature and the stability of the protein itself. Generally, the shelf life of liquid form is 6 months at -20°C/-80°C. The shelf life of lyophilized form is 12 months at -20°C/-80°C.