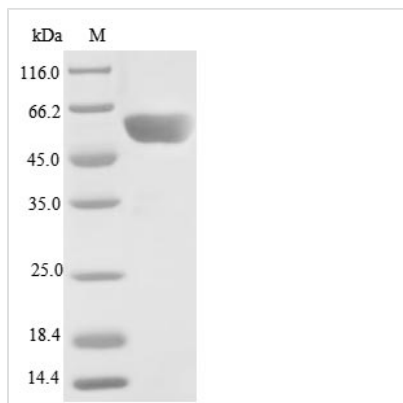




Recombinant Human Serine/threonine-protein phosphatase 2A 55 kDa regulatory subunit B gamma isoform (PPP2R2C)

Product Code	CSB-EP897535HU
Abbreviation	Recombinant Human PPP2R2C protein
Storage	The shelf life is related to many factors, storage state, buffer ingredients, storage temperature and the stability of the protein itself. Generally, the shelf life of liquid form is 6 months at -20°C/-80°C. The shelf life of lyophilized form is 12 months at -20°C/-80°C.
Uniprot No.	Q9Y2T4
Product Type	Recombinant Protein
Immunogen Species	Homo sapiens (Human)
Purity	Greater than 85% as determined by SDS-PAGE.
Sequence	MGEDTDTRKINHSFLRDHSYVTEADIISTVEFNHTGELLATGDKGGRVVIFQRE PESKNAPHSQGEYDVYSTFQSHEPEFDYDKSLEIEEKINKIKWLPQQNAHSL STNDKTIKLWKITERDKRPEGYNLKDDEEGKLKDLSTVTSLQVPVLKPMMLMVE VSPRRIFANGHTYHINSISVNSDCETYMSADDLRINLWHLAITDRSFNIVDIKPA NMEDLTEVITASEFHPHHCNLFVYSSSKGSLRLCDMRAAALCDKHSKLFEEPE DPSNRSFFSEIISVSDVKFSHSGRYMLTRDYLTVKVWDLNMEARPIETYQVH DYLRSKLCSLYENDCIFDKFECAWNGSDSVIMTGAYNNFFRMFDRNTKRDVTL EASRESSKPRAVLKPRRVCVGGKRRRDISVDSLDFTKKILHTAWHPAENIIAIA ATNNLYIFQDKVNSDMH
Research Area	Signal Transduction
Source	E.coli
Target Names	PPP2R2C
Protein Names	Recommended name: Serine/threonine-protein phosphatase 2A 55 kDa regulatory subunit B gamma isoform Alternative name(s): IMYPNO1 PP2A subunit B isoform B55-gamma PP2A subunit B isoform PR55-gamma PP2A subunit B isoform R2-gamma PP2
Expression Region	1-447aa
Notes	Repeated freezing and thawing is not recommended. Store working aliquots at 4°C for up to one week.
Tag Info	N-terminal 10xHis-tagged and C-terminal Myc-tagged
Mol. Weight	58.5 kDa
Protein Length	Full Length
Image	



(Tris-Glycine gel) Discontinuous SDS-PAGE (reduced) with 5% enrichment gel and 15% separation gel.

Reconstitution

We recommend that this vial be briefly centrifuged prior to opening to bring the contents to the bottom. Please reconstitute protein in deionized sterile water to a concentration of 0.1-1.0 mg/mL. We recommend to add 5-50% of glycerol (final concentration) and aliquot for long-term storage at -20°C/-80°C. Our default final concentration of glycerol is 50%. Customers could use it as reference.

Shelf Life

The shelf life is related to many factors, storage state, buffer ingredients, storage temperature and the stability of the protein itself. Generally, the shelf life of liquid form is 6 months at -20°C/-80°C. The shelf life of lyophilized form is 12 months at -20°C/-80°C.