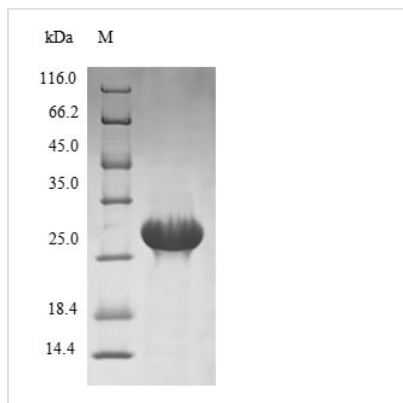




# Recombinant Human Testisin (PRSS21)

<b>Product Code</b>	CSB-EP897592HU
<b>Relevance</b>	Could regulate proteolytic events associated with testicular germ cell maturation.
<b>Abbreviation</b>	Recombinant Human PRSS21 protein
<b>Storage</b>	The shelf life is related to many factors, storage state, buffer ingredients, storage temperature and the stability of the protein itself. Generally, the shelf life of liquid form is 6 months at -20°C/-80°C. The shelf life of lyophilized form is 12 months at -20°C/-80°C.
<b>Uniprot No.</b>	Q9Y6M0
<b>Alias</b>	Eosinophil serine protease 1
<b>Product Type</b>	Recombinant Protein
<b>Immunogen Species</b>	Homo sapiens (Human)
<b>Purity</b>	Greater than 90% as determined by SDS-PAGE.
<b>Sequence</b>	IVGGEDAELGRWPWQGSLRLWDSHVCGVSLLSHRWALTAHCFETYSDLSD PSGWMVQFGQLTSMPSFWSLQAYYTRYFVSNIIYLSPRYLGNSPYDIALVKLSA PVTYTKHIQPICLQASTFEFENRTDCWVTGWGYIKEDEALPSPHTLQEVQVAII NNSMCNHLFLKYSFRKDIFGDMVCAGNAQGGKDACFGDSSGGPLACNKNGLW YQIGVVSWSVGVCGRPNRPGVYTNISHHFEWIQKLMAQS
<b>Research Area</b>	Cancer
<b>Source</b>	E.coli
<b>Target Names</b>	PRSS21
<b>Protein Names</b>	Recommended name: Testisin EC= 3.4.21.- Alternative name(s): Eosinophil serine protease 1 Short name= ESP-1 Serine protease 21
<b>Expression Region</b>	42-288aa
<b>Notes</b>	Repeated freezing and thawing is not recommended. Store working aliquots at 4°C for up to one week.
<b>Tag Info</b>	N-terminal 6xHis-tagged
<b>Mol. Weight</b>	31.8kDa
<b>Protein Length</b>	Full Length of Mature Protein
<b>Image</b>	



(Tris-Glycine gel) Discontinuous SDS-PAGE (reduced) with 5% enrichment gel and 15% separation gel.

### Reconstitution

We recommend that this vial be briefly centrifuged prior to opening to bring the contents to the bottom. Please reconstitute protein in deionized sterile water to a concentration of 0.1-1.0 mg/mL. We recommend to add 5-50% of glycerol (final concentration) and aliquot for long-term storage at -20°C/-80°C. Our default final concentration of glycerol is 50%. Customers could use it as reference.

### Shelf Life

The shelf life is related to many factors, storage state, buffer ingredients, storage temperature and the stability of the protein itself. Generally, the shelf life of liquid form is 6 months at -20°C/-80°C. The shelf life of lyophilized form is 12 months at -20°C/-80°C.