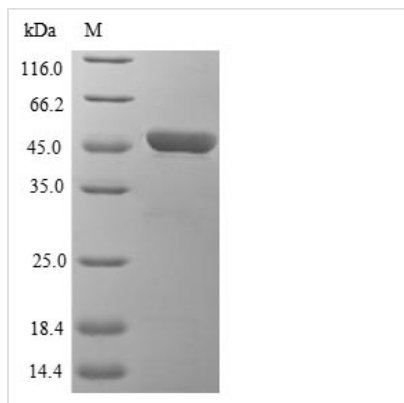




Recombinant Mouse Heme oxygenase 1 (Hmox1)

Product Code	CSB-EP010583MO
Relevance	Heme oxygenase cleaves the heme ring at the alpha methene bridge to form biliverdin. Biliverdin is subsequently converted to bilirubin by biliverdin reductase. Under physiological conditions, the activity of heme oxygenase is highest in the spleen, where senescent erythrocytes are sequestered and destroyed. Exhibits cytoprotective effects since excess of free heme sensitizes cells to undergo apoptosis.
Abbreviation	Recombinant Mouse Hmox1 protein
Storage	The shelf life is related to many factors, storage state, buffer ingredients, storage temperature and the stability of the protein itself. Generally, the shelf life of liquid form is 6 months at -20°C/-80°C. The shelf life of lyophilized form is 12 months at -20°C/-80°C.
Uniprot No.	P14901
Product Type	Recombinant Protein
Immunogen Species	Mus musculus (Mouse)
Purity	≥ 85% as determined by SDS-PAGE.
Sequence	MERPQPDSMPQDLSEALKEATKEVHIQAENAEFMKNFQKGGQVSREGFKLVMA SLYHIYTALEEEIERNKQNPVYAPLYFPEELHRRRAALEQDMAFWYGPHWQEIIP CTPATQHYYKRLHEVGRTHPELLVAHAYTRYLGDLGGQVLKKAQKAMALPS SGEGLAFFTFPNIDSPKFKQLYRARMNTLEMTPEVKHRVTEEAKTAFLLNIEL FEELQVMLTEEHKDQSPSQMASLRQRPASLVQDTAPAETPRGKPKQISTSSSQ TPLLQWVLTLSFLLATVAVGIYAM
Research Area	Cell Biology
Source	E.coli
Target Names	Hmox1
Protein Names	P32 protein
Expression Region	1-289aa
Notes	Repeated freezing and thawing is not recommended. Store working aliquots at 4°C for up to one week.
Tag Info	N-terminal 6xHis-B2M-tagged
Mol. Weight	46.9 kDa
Protein Length	Full Length
Image	



(Tris-Glycine gel) Discontinuous SDS-PAGE (reduced) with 5% enrichment gel and 15% separation gel.

Reconstitution

We recommend that this vial be briefly centrifuged prior to opening to bring the contents to the bottom. Please reconstitute protein in deionized sterile water to a concentration of 0.1-1.0 mg/mL. We recommend to add 5-50% of glycerol (final concentration) and aliquot for long-term storage at $-20^{\circ}\text{C}/-80^{\circ}\text{C}$. Our default final concentration of glycerol is 50%. Customers could use it as reference.

Shelf Life

The shelf life is related to many factors, storage state, buffer ingredients, storage temperature and the stability of the protein itself. Generally, the shelf life of liquid form is 6 months at $-20^{\circ}\text{C}/-80^{\circ}\text{C}$. The shelf life of lyophilized form is 12 months at $-20^{\circ}\text{C}/-80^{\circ}\text{C}$.