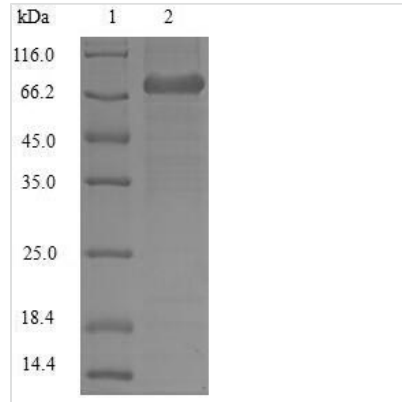




# Recombinant Human Plastin-2 (LCP1)

<b>Product Code</b>	CSB-BP012824HU
<b>Relevance</b>	Actin-binding protein. Plays a role in the activation of T-cells in response to costimulation through TCR/CD3 and CD2 or CD28. Modulates the cell surface expression of IL2RA/CD25 and CD69.
<b>Abbreviation</b>	Recombinant Human LCP1 protein
<b>Storage</b>	The shelf life is related to many factors, storage state, buffer ingredients, storage temperature and the stability of the protein itself. Generally, the shelf life of liquid form is 6 months at -20°C/-80°C. The shelf life of lyophilized form is 12 months at -20°C/-80°C.
<b>Uniprot No.</b>	P13796
<b>Product Type</b>	Recombinant Protein
<b>Immunogen Species</b>	Homo sapiens (Human)
<b>Purity</b>	≥ 85% as determined by SDS-PAGE.
<b>Sequence</b>	<p>           ARGSVSDEEMMELREAFKVDTDGNGYISFNELNDFKAAACLPLPGYRVREIT            ENLMATGDLDDQGRISFDEFIKIFHGLKSTDVAKTFRKAINKKEGICAIGGTSEQ            SSVGTTQHSYSEEEKYAFVNWINKALENDPDCRHVPMNPNTNDFNAVGDGIV            LCKMINLSVPDTIDERTINKKLTPTIQTENLNLALNSASAIGCHVVNIGAEDLKE            GKPYLVLLWQVIKIGLFADIELSRNEALIALLRREGESLEDLMKLSPEELLRW            ANYHLENAGCNKIGNFSTDIKDSKAYYHLEQVAPKGDEEGVPAVIDMSGLR            EKDDIQRACMLQQAERLGCRRQFVTATDVVRGNPKLNLAFLANLFRYPALHK            PENQDIDWGALEGETREERTFRNWMNSLGVNPRVNHLYSDLSDALVIFQLYE            KIKVPVDWNRVKNPPYPKLGGMKLENCNYAVELGKNQAKFSLVGIGGQDL            NEGNRTLTLALIWQLMRRYTLNILEEIGGGQKVNDIIVNWVNETLREAKKSSSI            SSFKDPKISTSLPVLDLIDAIQPGSINYDLLKTENLNDDEKLNNAKYAISMARIG            ARVYALPEDLVEVNPKMVMVTVFACLMGKGMKRV         </p>
<b>Research Area</b>	others
<b>Source</b>	Baculovirus
<b>Target Names</b>	LCP1
<b>Protein Names</b>	L-plastin LC64P Lymphocyte cytosolic protein 1
<b>Expression Region</b>	2-627aa
<b>Notes</b>	Repeated freezing and thawing is not recommended. Store working aliquots at 4°C for up to one week.
<b>Tag Info</b>	N-terminal 10xHis-tagged
<b>Mol. Weight</b>	72.7kDa
<b>Protein Length</b>	Full Length of Mature Protein
<b>Image</b>	



(Tris-Glycine gel) Discontinuous SDS-PAGE (reduced) with 5% enrichment gel and 15% separation gel.

### Reconstitution

We recommend that this vial be briefly centrifuged prior to opening to bring the contents to the bottom. Please reconstitute protein in deionized sterile water to a concentration of 0.1-1.0 mg/mL. We recommend to add 5-50% of glycerol (final concentration) and aliquot for long-term storage at -20°C/-80°C. Our default final concentration of glycerol is 50%. Customers could use it as reference.

### Shelf Life

The shelf life is related to many factors, storage state, buffer ingredients, storage temperature and the stability of the protein itself. Generally, the shelf life of liquid form is 6 months at -20°C/-80°C. The shelf life of lyophilized form is 12 months at -20°C/-80°C.