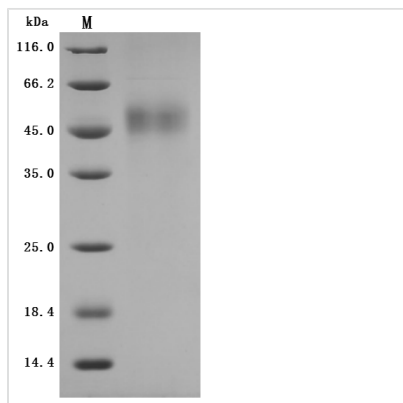


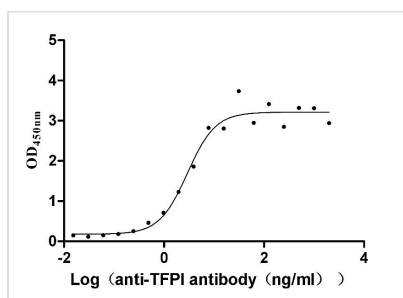


Recombinant Rabbit Tissue factor pathway inhibitor (TFPI) (Active)

Product Code	CSB-MP023437RB
Abbreviation	Recombinant Rabbit TFPI protein (Active)
Storage	The shelf life is related to many factors, storage state, buffer ingredients, storage temperature and the stability of the protein itself. Generally, the shelf life of liquid form is 6 months at -20°C/-80°C. The shelf life of lyophilized form is 12 months at -20°C/-80°C.
Uniprot No.	P19761
Storage Buffer	Lyophilized from a 0.2 μm filtered 20 mM Tris-HCl, 0.5 M NaCl, 6% Trehalose, pH 8.0
Product Type	Recombinant Proteins
Immunogen Species	Oryctolagus cuniculus (Rabbit)
Biological Activity	Measured by its binding ability in a functional ELISA. Immobilized Rabbit TFPI at 1 μg/mL can bind Anti-TFPI recombinant antibody (CSB-RA023437MA01HU), the EC ₅₀ is 2.281-3.783 ng/mL.
Purity	Greater than 95% as determined by SDS-PAGE.
Sequence	AAEEDDEFTNITDIKPPLQKPTHSFCAMKVDDGPCRAYIKRFFFNILTHQCEEFI YGGCEGNENRFESLEECKEKCARDYPKMTTKLTFQKGKPDFCFLEEDPGICR GYITRYFYNNQSKQCERFKYGGCLGNLNNFESLEECKNTCENPTSDFQVDDH RTQLNTVNNTLINQPTKAPRRWAFHGPSWCLPPADRGLCQANEIRFFYNAIIG KCRPFKYSGCGNENNFTSKKACITACKKGFIPKSIKGGLIKTKRKKKKQPVKIT YVETFVKKT
Research Area	Others
Source	Mammalian cell
Target Names	TFPI
Protein Names	Recommended name: Tissue factor pathway inhibitor Short name= TFPI Alternative name(s): Extrinsic pathway inhibitor Short name= EPI Lipoprotein-associated coagulation inhibitor Short name= LACI
Expression Region	25-300aa
Notes	Repeated freezing and thawing is not recommended. Store working aliquots at 4°C for up to one week.
Tag Info	N-terminal 10xHis-tagged
Mol. Weight	35.4 kDa
Protein Length	Full Length of Mature Protein
Image	



(Tris-Glycine gel) Discontinuous SDS-PAGE (reduced) with 5% enrichment gel and 15% separation gel.



Activity
 Measured by its binding ability in a functional ELISA. Immobilized Rabbit TFPI at 1 µg/ml can bind Anti-TFPI recombinant antibody (CSB-RA023437MA01HU), the EC₅₀ is 2.281-3.783 ng/mL.

Endotoxin

Less than 1.0 EU/ug as determined by LAL method.

Reconstitution

We recommend that this vial be briefly centrifuged prior to opening to bring the contents to the bottom. Please reconstitute protein in deionized sterile water to a concentration of 0.1-1.0 mg/mL. We recommend to add 5-50% of glycerol (final concentration) and aliquot for long-term storage at -20°C/-80°C. Our default final concentration of glycerol is 50%. Customers could use it as reference.

Shelf Life

The shelf life is related to many factors, storage state, buffer ingredients, storage temperature and the stability of the protein itself. Generally, the shelf life of liquid form is 6 months at -20°C/-80°C. The shelf life of lyophilized form is 12 months at -20°C/-80°C.