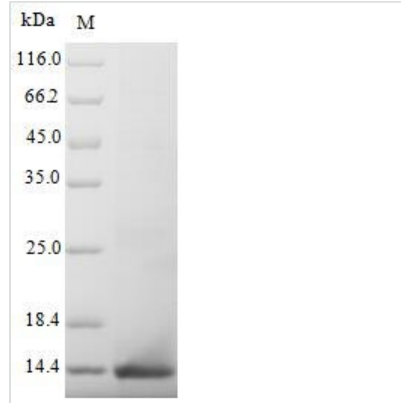




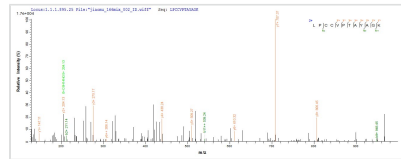
# Recombinant Mouse Anti-Muellerian hormone (Amh), partial

<b>Product Code</b>	CSB-EP001666MO
<b>Relevance</b>	This glycoprotein, produced by the Sertoli cells of the testis, causes regression of the Muellierian duct. It is also able to inhibit the growth of tumors derived from tissues of Muellierian duct origin.
<b>Abbreviation</b>	Recombinant Mouse Amh protein, partial
<b>Storage</b>	The shelf life is related to many factors, storage state, buffer ingredients, storage temperature and the stability of the protein itself. Generally, the shelf life of liquid form is 6 months at -20°C/-80°C. The shelf life of lyophilized form is 12 months at -20°C/-80°C.
<b>Uniprot No.</b>	P27106
<b>Product Type</b>	Recombinant Proteins
<b>Immunogen Species</b>	Mus musculus (Mouse)
<b>Purity</b>	Greater than 90% as determined by SDS-PAGE.
<b>Sequence</b>	DKGQDGPCALRELSVDLRAERSVLIPETYQANNCQGACRWPQSDRNPRYGN HVVLLLKMQARGAALGRLPCCVPTAYAGKLLISLSEERISADHVPNMVATEC
<b>Research Area</b>	others
<b>Source</b>	E.coli
<b>Target Names</b>	Amh
<b>Protein Names</b>	Recommended name: Muellierian-inhibiting factor Alternative name(s): Anti-Muellierian hormone Short name= AMH Muellierian-inhibiting substance Short name= MIS
<b>Expression Region</b>	450-552aa
<b>Notes</b>	Repeated freezing and thawing is not recommended. Store working aliquots at 4°C for up to one week.
<b>Tag Info</b>	Tag-Free
<b>Mol. Weight</b>	11.3kDa
<b>Protein Length</b>	Partial

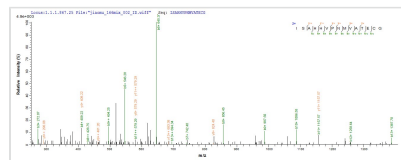
## Image



(Tris-Glycine gel) Discontinuous SDS-PAGE (reduced) with 5% enrichment gel and 15% separation gel.



Based on the SEQUEST from database of E.coli host and target protein, the LC-MS/MS Analysis result of CSB-EP001666MO could indicate that this peptide derived from E.coli-expressed Mus musculus (Mouse) Amh.



Based on the SEQUEST from database of E.coli host and target protein, the LC-MS/MS Analysis result of CSB-EP001666MO could indicate that this peptide derived from E.coli-expressed Mus musculus (Mouse) Amh.

**Shelf Life**

The shelf life is related to many factors, storage state, buffer ingredients, storage temperature and the stability of the protein itself. Generally, the shelf life of liquid form is 6 months at -20°C/-80°C. The shelf life of lyophilized form is 12 months at -20°C/-80°C.