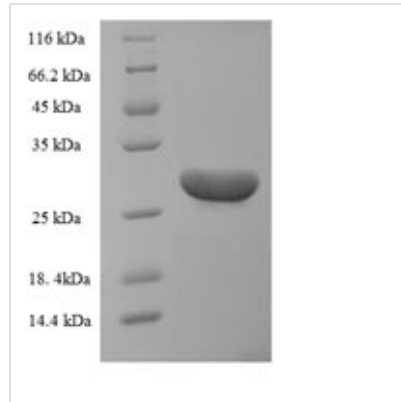




Recombinant Human Neurotrophic factor BDNF precursor form (BDNF)

| | |
|--------------------------|---|
| Product Code | CSB-EP002655HU |
| Relevance | During development, promotes the survival and differentiation of selected neuronal populations of the peripheral and central nervous systems. Participates in axonal growth, pathfinding and in the modulation of dendritic growth and morphology. Major regulator of synaptic transmission and plasticity at adult synapses in many regions of the CNS. The versatility of BDNF is emphasized by its contribution to a range of adaptive neuronal responses including long-term potentiation (LTP), long-term depression (LTD), certain forms of short-term synaptic plasticity, as well as homeostatic regulation of intrinsic neuronal excitability. |
| Abbreviation | Recombinant Human BDNF protein |
| Storage | The shelf life is related to many factors, storage state, buffer ingredients, storage temperature and the stability of the protein itself. Generally, the shelf life of liquid form is 6 months at -20°C/-80°C. The shelf life of lyophilized form is 12 months at -20°C/-80°C. |
| Uniprot No. | P23560 |
| Product Type | Recombinant Proteins |
| Immunogen Species | Homo sapiens (Human) |
| Purity | Greater than 90% as determined by SDS-PAGE. |
| Sequence | HSDPARRGELSVCDSEWVTAADKKTAVDMSGGTVTVLEKVPVSKGQLKQY FYETKCNPMGYTKEGCRGIDKRHWNSQCRTTQSYVRLTMDSKKRIGWRFIR IDTSCVCTLTIKRGR |
| Research Area | Neuroscience |
| Source | E.coli |
| Target Names | BDNF |
| Protein Names | Recommended name: Brain-derived neurotrophic factor Short name= BDNF Alternative name(s): Abrineurin |
| Expression Region | 129-247aa |
| Notes | Repeated freezing and thawing is not recommended. Store working aliquots at 4°C for up to one week. |
| Tag Info | N-terminal 6xHis-SUMO-tagged |
| Mol. Weight | 29.5kDa |
| Protein Length | Full Length of Mature Protein |
| Image | |



(Tris-Glycine gel) Discontinuous SDS-PAGE (reduced) with 5% enrichment gel and 15% separation gel.

Shelf Life

The shelf life is related to many factors, storage state, buffer ingredients, storage temperature and the stability of the protein itself.

Generally, the shelf life of liquid form is 6 months at -20°C/-80°C. The shelf life of lyophilized form is 12 months at -20°C/-80°C.