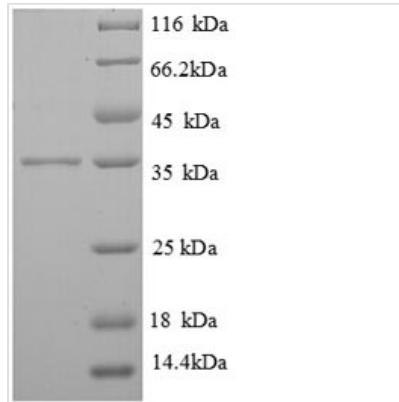




# Recombinant Human High affinity immunoglobulin epsilon receptor subunit gamma (FCER1G)

<b>Product Code</b>	CSB-EP008533HU
<b>Relevance</b>	Associates with a variety of FcR alpha chains to form a functional signaling complex. Regulates several aspects of the immune response. The gamma subunit has a critical role in allowing the IgE Fc receptor to reach the cell surface. Also involved in collagen-mediated platelet activation and in neutrophil activation mediated by integrin.
<b>Abbreviation</b>	Recombinant Human FCER1G protein
<b>Storage</b>	The shelf life is related to many factors, storage state, buffer ingredients, storage temperature and the stability of the protein itself. Generally, the shelf life of liquid form is 6 months at -20°C/-80°C. The shelf life of lyophilized form is 12 months at -20°C/-80°C.
<b>Uniprot No.</b>	P30273
<b>Alias</b>	Fc receptor gamma-chain ;FcRgammaFc-epsilon RI-gammaIgE Fc receptor subunit gamma ;FceRI gamma
<b>Product Type</b>	Recombinant Protein
<b>Immunogen Species</b>	Homo sapiens (Human)
<b>Purity</b>	≥ 90% as determined by SDS-PAGE.
<b>Sequence</b>	LGEPQLCYILDAILFLYGIVLTLTYCRLKIQVRKAAITSYEKSDGVYTG LSTRNQE TYETLKHEKPPQ
<b>Source</b>	E.coli
<b>Target Names</b>	FCER1G
<b>Protein Names</b>	Recommended name: High affinity immunoglobulin epsilon receptor subunit gamma Alternative name(s): Fc receptor gamma-chain Short name= FcRgamma Fc-epsilon RI-gamma IgE Fc receptor subunit gamma Short name= FceRI gamma
<b>Expression Region</b>	19-86aa
<b>Notes</b>	Repeated freezing and thawing is not recommended. Store working aliquots at 4°C for up to one week.
<b>Tag Info</b>	N-terminal GST-tagged
<b>Mol. Weight</b>	34.8kDa
<b>Protein Length</b>	Full Length of Mature Protein
<b>Image</b>	



(Tris-Glycine gel) Discontinuous SDS-PAGE (reduced) with 5% enrichment gel and 15% separation gel.

### Reconstitution

We recommend that this vial be briefly centrifuged prior to opening to bring the contents to the bottom. Please reconstitute protein in deionized sterile water to a concentration of 0.1-1.0 mg/mL. We recommend to add 5-50% of glycerol (final concentration) and aliquot for long-term storage at  $-20^{\circ}\text{C}/-80^{\circ}\text{C}$ . Our default final concentration of glycerol is 50%. Customers could use it as reference.

### Shelf Life

The shelf life is related to many factors, storage state, buffer ingredients, storage temperature and the stability of the protein itself. Generally, the shelf life of liquid form is 6 months at  $-20^{\circ}\text{C}/-80^{\circ}\text{C}$ . The shelf life of lyophilized form is 12 months at  $-20^{\circ}\text{C}/-80^{\circ}\text{C}$ .