



Recombinant Human Receptor-type tyrosine-protein phosphatase C (PTPRC), Partial

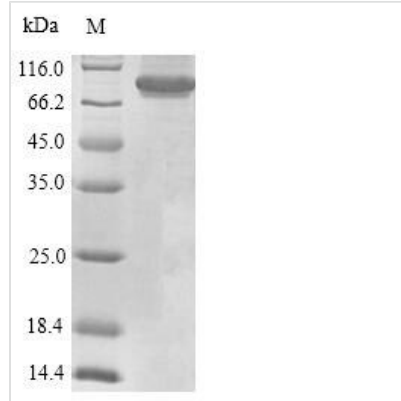
Product Code	CSB-EP019049HU
Relevance	Protein tyrosine-protein phosphatase required for T-cell activation through the antigen receptor. Acts as a positive regulator of T-cell coactivation upon binding to DPP4. The first PTPase domain has enzymatic activity, while the second one seems to affect the substrate specificity of the first one. Upon T-cell activation, recruits and dephosphorylates SKAP1 and FYN. Dephosphorylates LYN, and thereby modulates LYN activity
Abbreviation	Recombinant Human PTPRC protein, partial
Storage	The shelf life is related to many factors, storage state, buffer ingredients, storage temperature and the stability of the protein itself. Generally, the shelf life of liquid form is 6 months at -20°C/-80°C. The shelf life of lyophilized form is 12 months at -20°C/-80°C.
Uniprot No.	P08575
Product Type	Recombinant Proteins
Immunogen Species	Homo sapiens (Human)
Purity	Greater than 90% as determined by SDS-PAGE.
Sequence	<p> QSPTPSPTGLTTAKMPSVPLSSDPLPHTHTTAFSPASTFERENDFSETTTSLSPD NTSTQVSPDSLNASAFNTTGVSSVQTPHLPHTHADSQTSPSAGTDTQTFSGSA ANAKLNPTPGSNAISDVPGERSTASTFPTDPVSPLTTTSLAHHSSAALPARTS NTTITANTSDAYLNASETTTLLSPSGSAVISTTTIATTPSKPTCDEKYANITVDYLY NKETKLFTAKLNVNENVECGNNTCTNNEVHNLTECKNASVSISHNSCTAPDKT LILDVPPGVVEKFKLHDCTQVEKADTTICLKWKNIEFTTCDTQNITYRFQCGNMIF DNKEIKLENLEPEHEYKCDSEILYNNHKFTNASKIIKTDGFGSPGEPQIIFCRSEAA HQGVITWNPPQRSFHNFTLCYIKETEKDCLNLDKNLIKDYDLQNLKPYTKYVLSL HAYIIAKVQRNGSAAMCHFTTKSAPPSQVWNMTVSMSTSDNSMHVKCRPPRD RNGTHERYHLEVEAGNTLVRNESHKNCDFRVKDLQYSTDYTFKAYFHNGDYP GEPFILHHSTSYNSK </p>
Research Area	Immunology
Source	E.coli
Target Names	PTPRC
Protein Names	Recommended name: Receptor-type tyrosine-protein phosphatase C EC= 3.1.3.48 Alternative name(s): Leukocyte common antigen Short name= L-CA T200 CD_antigen= CD45
Expression Region	26-577aa
Notes	Repeated freezing and thawing is not recommended. Store working aliquots at 4°C for up to one week.
Tag Info	N-terminal 6xHis-SUMO-tagged



Mol. Weight 76.8kDa

Protein Length Extracellular Domain

Image



(Tris-Glycine gel) Discontinuous SDS-PAGE (reduced) with 5% enrichment gel and 15% separation gel.

Shelf Life

The shelf life is related to many factors, storage state, buffer ingredients, storage temperature and the stability of the protein itself.

Generally, the shelf life of liquid form is 6 months at -20°C/-80°C. The shelf life of lyophilized form is 12 months at -20°C/-80°C.