



# Recombinant Mouse Glucose-6-phosphate isomerase (Gpi)

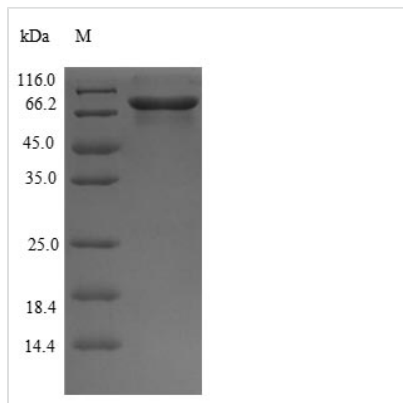
<b>Product Code</b>	CSB-EP009717MO
<b>Relevance</b>	Besides its role as a glycolytic enzyme, mammalian GPI can function as a tumor-secreted cytokine and an angiogenic factor (AMF) that stimulates endothelial cell motility. GPI is also a neurotrophic factor (Neuroleukin) for spinal and sensory neurons.
<b>Abbreviation</b>	Recombinant Mouse Gpi protein
<b>Storage</b>	The shelf life is related to many factors, storage state, buffer ingredients, storage temperature and the stability of the protein itself. Generally, the shelf life of liquid form is 6 months at -20°C/-80°C. The shelf life of lyophilized form is 12 months at -20°C/-80°C.
<b>Uniprot No.</b>	P06745
<b>Alias</b>	Autocrine motility factor
<b>Product Type</b>	Recombinant Protein
<b>Immunogen Species</b>	Mus musculus (Mouse)
<b>Purity</b>	Greater than 90% as determined by SDS-PAGE.
<b>Sequence</b>	AALTRNPQFQKLEWHRANSANLKLRELFEADPERFNNFSLNLNTNHGHILVD YSKNLVNKEVMQMLVELAKSRGVEAARDNMFSGSKINYTENRAVLHVALRNR SNTPIKVDGKDVMPEVNRVLDKMKSFQQRVRSQDWKGYTGKSITDIINIGIGGS DLGPLMVTEALPKYKGGPRVWFVSNIDGTHIAKTLASLSPETSLFIIASKTFTT QETITNAETAKEWFLEAAKDPSAVAKHFVALSTNTAKVKEFGIDPQNMFEFWD WVGGRYSLWSAIGLSIALHVGFDHFEQLLSGAHWMDQHFLKTPLEKNAPVLLA LLGIWYINCYGCETHALLPYDQYMHRFAAYFQQGDMESENGKYITKSGARVDH QTGPIVWGEPTNGQHAFYQLIHQGTKMIPCDLIPVQTQHPIRKGLHHKILLA NFLAQTEALMKGKLP EEARKELQAAGKSPEDLEKLLPHKVFEGNRPTNSIVFT KLTPFILGALIAMYEHKIFVQGIMWDINSFDQWGVELGKQLAKKIEPELEGSSAV TSHDSSTNGLISFIKQQRDTKLE
<b>Research Area</b>	Neuroscience
<b>Source</b>	E.coli
<b>Target Names</b>	Gpi
<b>Protein Names</b>	Recommended name: Glucose-6-phosphate isomerase Short name= GPI EC= 5.3.1.9 Alternative name(s): Autocrine motility factor Short name= AMF Neuroleukin Short name= NLK Phosphoglucose isomerase Short name=
<b>Expression Region</b>	2-558aa
<b>Notes</b>	Repeated freezing and thawing is not recommended. Store working aliquots at 4°C for up to one week.
<b>Tag Info</b>	N-terminal 6xHis-B2M-tagged


**Mol. Weight**

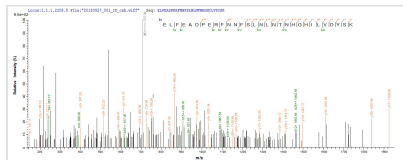
76.6kDa

**Protein Length**

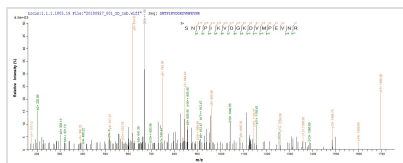
Full Length of Mature Protein

**Image**


(Tris-Glycine gel) Discontinuous SDS-PAGE (reduced) with 5% enrichment gel and 15% separation gel.



Based on the SEQUEST from database of E.coli host and target protein, the LC-MS/MS Analysis result of CSB-EP009717MO could indicate that this peptide derived from E.coli-expressed Mus musculus (Mouse) Gpi.



Based on the SEQUEST from database of E.coli host and target protein, the LC-MS/MS Analysis result of CSB-EP009717MO could indicate that this peptide derived from E.coli-expressed Mus musculus (Mouse) Gpi.

**Reconstitution**

We recommend that this vial be briefly centrifuged prior to opening to bring the contents to the bottom. Please reconstitute protein in deionized sterile water to a concentration of 0.1-1.0 mg/mL. We recommend to add 5-50% of glycerol (final concentration) and aliquot for long-term storage at -20°C/-80°C. Our default final concentration of glycerol is 50%. Customers could use it as reference.

**Shelf Life**

The shelf life is related to many factors, storage state, buffer ingredients, storage temperature and the stability of the protein itself. Generally, the shelf life of liquid form is 6 months at -20°C/-80°C. The shelf life of lyophilized form is 12 months at -20°C/-80°C.