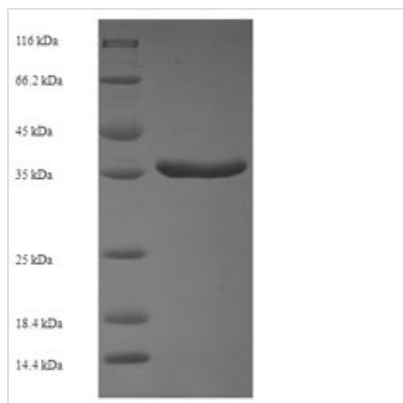




Recombinant Human Protein phosphatase 1B (PPM1B)

| | |
|--------------------------|--|
| Product Code | CSB-EP018490HU |
| Relevance | Enzyme with a broad specificity. Dephosphorylates CDK2 and CDK6 in vitro. Dephosphorylates PRKAA1 and PRKAA2. Inhibits TBK1-mediated antiviral signaling by dephosphorylating it at 'Ser-172'. Plays an important role in the termination of TNF-alpha-mediated NF-kappa-B activation through dephosphorylating and inactivating IKBKB/IKKB. |
| Abbreviation | Recombinant Human PPM1B protein |
| Storage | The shelf life is related to many factors, storage state, buffer ingredients, storage temperature and the stability of the protein itself. Generally, the shelf life of liquid form is 6 months at -20°C/-80°C. The shelf life of lyophilized form is 12 months at -20°C/-80°C. |
| Uniprot No. | O75688 |
| Product Type | Recombinant Proteins |
| Immunogen Species | Homo sapiens (Human) |
| Purity | ≥ 90% as determined by SDS-PAGE. |
| Sequence | MSIVLVCFSNAPKVSDEAVKKDSELDKHLESRVVEIMEKSGEEGMPDLAHVMR ILSAENIPNLPPGGGLAGKRNVIEAVYSRLNPHRES DGASDEAEESGSQGKLV EALRQMRINHRGN YRQLLEEM L TSYRLAKVEGEE SPAEPAATATSSNSDAGN PVTMQESHTES E SGLAELDSSNEDAGTKMSGEKI |
| Research Area | Signal Transduction |
| Source | E.coli |
| Target Names | PPM1B |
| Protein Names | Recommended name: Protein phosphatase 1B EC= 3.1.3.16 Alternative name(s): Protein phosphatase 2C isoform beta Short name= PP2C-beta |
| Expression Region | 1-192aa |
| Notes | Repeated freezing and thawing is not recommended. Store working aliquots at 4°C for up to one week. |
| Tag Info | N-terminal 6xHis-SUMO-tagged |
| Mol. Weight | 36.6kDa |
| Protein Length | Full Length of Isoform Beta-X |
| Image | |



(Tris-Glycine gel) Discontinuous SDS-PAGE (reduced) with 5% enrichment gel and 15% separation gel.

Shelf Life

The shelf life is related to many factors, storage state, buffer ingredients, storage temperature and the stability of the protein itself.

Generally, the shelf life of liquid form is 6 months at -20°C/-80°C. The shelf life of lyophilized form is 12 months at -20°C/-80°C.