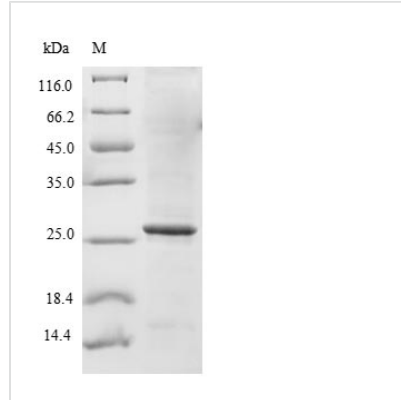




# Recombinant Human Sodium-dependent phosphate transport protein 2B (SLC34A2), partial

<b>Product Code</b>	CSB-EP021581HU
<b>Relevance</b>	May be involved in actively transporting phosphate into cells via Na <sup>+</sup> cotransport. It may be the main phosphate transport protein in the intestinal brush border membrane. May have a role in the synthesis of surfactant in lungs' alveoli.
<b>Abbreviation</b>	Recombinant Human SLC34A2 protein, partial
<b>Storage</b>	The shelf life is related to many factors, storage state, buffer ingredients, storage temperature and the stability of the protein itself. Generally, the shelf life of liquid form is 6 months at -20°C/-80°C. The shelf life of lyophilized form is 12 months at -20°C/-80°C.
<b>Uniprot No.</b>	O95436
<b>Product Type</b>	Recombinant Protein
<b>Immunogen Species</b>	Homo sapiens (Human)
<b>Purity</b>	Greater than 85% as determined by SDS-PAGE.
<b>Sequence</b>	LLQSRCPRVLPKKLQNWFLPLWMRSLKPWDVAVVSKFTGCFQMRCCCCRV CCRACCLLCDCPKCCRCSKCCEDLEEAQEGQDVPVKAPETFDNITISREAQG EVPASDSKTECTA
<b>Research Area</b>	others
<b>Source</b>	E.coli
<b>Target Names</b>	SLC34A2
<b>Protein Names</b>	Na(+)-dependent phosphate cotransporter 2B NaPi3b Sodium/phosphate cotransporter 2B
<b>Expression Region</b>	574-689aa
<b>Notes</b>	Repeated freezing and thawing is not recommended. Store working aliquots at 4°C for up to one week.
<b>Tag Info</b>	N-terminal 6xHis-B2M-tagged
<b>Mol. Weight</b>	27.1 kDa
<b>Protein Length</b>	Partial
<b>Image</b>	



(Tris-Glycine gel) Discontinuous SDS-PAGE (reduced) with 5% enrichment gel and 15% separation gel.

### Reconstitution

We recommend that this vial be briefly centrifuged prior to opening to bring the contents to the bottom. Please reconstitute protein in deionized sterile water to a concentration of 0.1-1.0 mg/mL. We recommend to add 5-50% of glycerol (final concentration) and aliquot for long-term storage at -20°C/-80°C. Our default final concentration of glycerol is 50%. Customers could use it as reference.

### Shelf Life

The shelf life is related to many factors, storage state, buffer ingredients, storage temperature and the stability of the protein itself. Generally, the shelf life of liquid form is 6 months at -20°C/-80°C. The shelf life of lyophilized form is 12 months at -20°C/-80°C.