



# Recombinant Human Elongation factor 1-alpha 1 (EEF1A1)

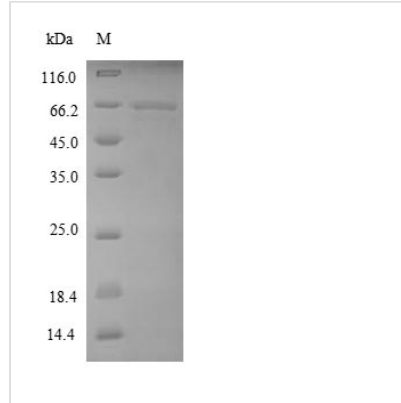
<b>Product Code</b>	CSB-EP007409HU
<b>Relevance</b>	This protein promotes the GTP-dependent binding of aminoacyl-tRNA to the A-site of ribosomes during protein biosynthesis. With PARP1 and TXK, forms a complex that acts as a T helper 1 (Th1) cell-specific transcription factor and binds the promoter of IFN-gamma to directly regulate its transcription, and is thus involved importantly in Th1 cytokine production.
<b>Abbreviation</b>	Recombinant Human EEF1A1 protein
<b>Storage</b>	The shelf life is related to many factors, storage state, buffer ingredients, storage temperature and the stability of the protein itself. Generally, the shelf life of liquid form is 6 months at -20°C/-80°C. The shelf life of lyophilized form is 12 months at -20°C/-80°C.
<b>Uniprot No.</b>	P68104
<b>Alias</b>	Elongation factor Tu
<b>Product Type</b>	Recombinant Protein
<b>Immunogen Species</b>	Homo sapiens (Human)
<b>Purity</b>	≥ 90% as determined by SDS-PAGE.
<b>Sequence</b>	MGKEKTHINIVVIGHVDSGKSTTTGHLIYKCGGIDKRTIEKFEKEAAEMGKGSFK YAWVLDKDKAERERGITIDISLWKFETSKYYVTIIDAPGHRDFIKNMITGTSQAD CAVLIVAAGVGEFEAGISKNGQTREHALLAYTLGVKQLIVGVNKM DSTEPPYSQ KRYEEIVKEVSTYIKKIGYNPDTVAFVPISGWNGDNMLEPSANMPWFKGWKVT RKDGNASGTTLLEALDCILPPTTRPTDKPLRLPLQDVYKIGGIGTVPVGRVETGV LKPGMVVTFAPVNVTTTEVKSVEMHHEALSEALPGDNVGFNVKNVSVKDVRRG NVAGDSKNDPPMEAAGFTAQVIILNHPGQISAGYAPVLDCHTAHIACKFAELKE KIDRRSGKKLEDGPKFLKSGDAAIVDMVPGKPMCVESFSDYPLGRFAVRDM RQTVAVGVKAVDKKAAGAGKVTKSAQKAQKAK
<b>Research Area</b>	Epigenetics and Nuclear Signaling
<b>Source</b>	E.coli
<b>Target Names</b>	EEF1A1
<b>Protein Names</b>	Recommended name: Elongation factor 1-alpha 1 Short name= EF-1-alpha-1 Alternative name(s): Elongation factor Tu Short name= EF-Tu Eukaryotic elongation factor 1 A-1 Short name= eEF1A-1 Leukocyte receptor cluster member 7
<b>Expression Region</b>	1-462aa
<b>Notes</b>	Repeated freezing and thawing is not recommended. Store working aliquots at 4°C for up to one week.
<b>Tag Info</b>	N-terminal 6xHis-SUMO-tagged



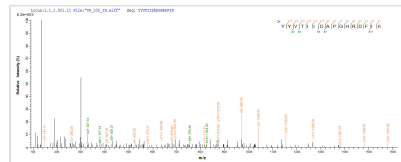
**Mol. Weight** 66.1kDa

**Protein Length** Full Length

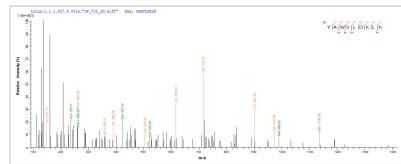
**Image**



(Tris-Glycine gel) Discontinuous SDS-PAGE (reduced) with 5% enrichment gel and 15% separation gel.



Based on the SEQUEST from database of E.coli host and target protein, the LC-MS/MS Analysis result of CSB-EP007409HU could indicate that this peptide derived from E.coli-expressed Homo sapiens (Human) EEF1A1.



Based on the SEQUEST from database of E.coli host and target protein, the LC-MS/MS Analysis result of CSB-EP007409HU could indicate that this peptide derived from E.coli-expressed Homo sapiens (Human) EEF1A1.

**Reconstitution**

We recommend that this vial be briefly centrifuged prior to opening to bring the contents to the bottom. Please reconstitute protein in deionized sterile water to a concentration of 0.1-1.0 mg/mL. We recommend to add 5-50% of glycerol (final concentration) and aliquot for long-term storage at -20°C/-80°C. Our default final concentration of glycerol is 50%. Customers could use it as reference.

**Shelf Life**

The shelf life is related to many factors, storage state, buffer ingredients, storage temperature and the stability of the protein itself. Generally, the shelf life of liquid form is 6 months at -20°C/-80°C. The shelf life of lyophilized form is 12 months at -20°C/-80°C.