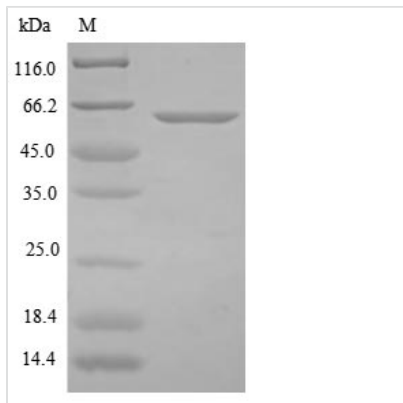


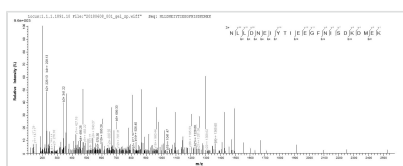


Recombinant Clostridium botulinum Botulinum neurotoxin type B (botB), partial

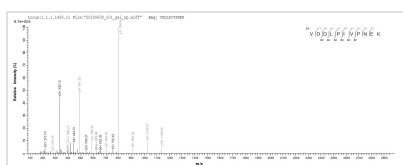
Product Code	CSB-EP318083CLQ
Abbreviation	Recombinant Clostridium botulinum botB protein, partial
Storage	The shelf life is related to many factors, storage state, buffer ingredients, storage temperature and the stability of the protein itself. Generally, the shelf life of liquid form is 6 months at -20°C/-80°C. The shelf life of lyophilized form is 12 months at -20°C/-80°C.
Uniprot No.	P10844
Product Type	Recombinant Protein
Immunogen Species	Clostridium botulinum
Purity	Greater than 85% as determined by SDS-PAGE.
Sequence	MPVTINNFNYNDPIDNNNIIMMEPPFARGTGRYKAFKITDRIWIIPERYTFGYK PEDFNKSSGIFNRDVCEYYDPDYLNTNDKKNIFLQTMIKLFNRIKSKPLGEKLL MIINGIPYLGDRRVPLEEFNTNIASVTVNKLISNPGEVERKKGIFANLIIFGPGPVL NENETIDIGIQNHFASREGFGGIMQMKFCPEYVSVFNNVQENKGASIFNRRGY FSDPALILMHELIHVLHGLYGIVKVDLPIVPNEKFFMQSTDAIQAEELYTFGGQ DPSIITPSTDKSIYDKVLQNFGRGIVDRNLKVLVCISDPNININIYKNKFKDKYKFVE DSEGKYSIDVESFDKLYKSLMFGFTETNIAENYKIKTRASYFSDSLPPVKIKNLL DNEIYTIEEGFNISDKDMEKEYRGQNKAINKQAYEEISKE
Research Area	Others
Source	E.coli
Target Names	botB
Protein Names	Recommended name: Botulinum neurotoxin type B Short name= BoNT/B EC= 3.4.24.69 Alternative name(s): Bontoxilysin-B Cleaved into the following 2 chains: 1. Botulinum neurotoxin B light chain 2. Botulinum neurotoxin B heavy cha
Expression Region	1-427aa
Notes	Repeated freezing and thawing is not recommended. Store working aliquots at 4°C for up to one week.
Tag Info	N-terminal 6xHis-B2M-tagged
Mol. Weight	63.3 kDa
Protein Length	Partial
Image	



(Tris-Glycine gel) Discontinuous SDS-PAGE (reduced) with 5% enrichment gel and 15% separation gel.



Based on the SEQUEST from database of E.coli host and target protein, the LC-MS/MS Analysis result of CSB-EP318083CLQ could indicate that this peptide derived from E.coli-expressed Clostridium botulinum botB.



Based on the SEQUEST from database of E.coli host and target protein, the LC-MS/MS Analysis result of CSB-EP318083CLQ could indicate that this peptide derived from E.coli-expressed Clostridium botulinum botB.

Reconstitution

We recommend that this vial be briefly centrifuged prior to opening to bring the contents to the bottom. Please reconstitute protein in deionized sterile water to a concentration of 0.1-1.0 mg/mL. We recommend to add 5-50% of glycerol (final concentration) and aliquot for long-term storage at -20°C/-80°C. Our default final concentration of glycerol is 50%. Customers could use it as reference.

Shelf Life

The shelf life is related to many factors, storage state, buffer ingredients, storage temperature and the stability of the protein itself. Generally, the shelf life of liquid form is 6 months at -20°C/-80°C. The shelf life of lyophilized form is 12 months at -20°C/-80°C.