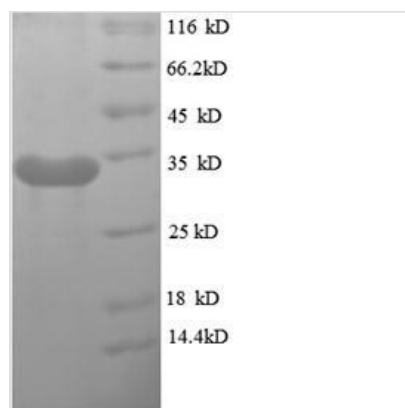




# Recombinant Hirudo medicinalis Hirudin variant-1

<b>Product Code</b>	CSB-EP365510HSM
<b>Relevance</b>	Hirudin is a potent thrombin-specific protease inhibitor. It forms a stable non-covalent complex with alpha-thrombin, thereby abolishing its ability to cleave fibrinogen.
<b>Abbreviation</b>	Recombinant Hirudo medicinalis Hirudin variant-1 protein
<b>Storage</b>	The shelf life is related to many factors, storage state, buffer ingredients, storage temperature and the stability of the protein itself. Generally, the shelf life of liquid form is 6 months at -20°C/-80°C. The shelf life of lyophilized form is 12 months at -20°C/-80°C.
<b>Uniprot No.</b>	P01050
<b>Product Type</b>	Recombinant Protein
<b>Immunogen Species</b>	Hirudo medicinalis (Medicinal leech)
<b>Purity</b>	Greater than 90% as determined by SDS-PAGE.
<b>Sequence</b>	VVYTDCTESGQNLCLCEGSNVCGQGKNCILGSDGEKNQCVTGEGTPKPKQSH NDGDFEEIPEEYLQ
<b>Research Area</b>	Others
<b>Source</b>	E.coli
<b>Expression Region</b>	1-65aa
<b>Notes</b>	Repeated freezing and thawing is not recommended. Store working aliquots at 4°C for up to one week.
<b>Tag Info</b>	N-terminal GST-tagged
<b>Mol. Weight</b>	34.0kDa
<b>Protein Length</b>	Full Length

## Image



(Tris-Glycine gel) Discontinuous SDS-PAGE (reduced) with 5% enrichment gel and 15% separation gel.

## Reconstitution

We recommend that this vial be briefly centrifuged prior to opening to bring the contents to the bottom. Please reconstitute protein in deionized sterile water to a concentration of 0.1-1.0 mg/mL. We recommend to add 5-50% of glycerol (final



concentration) and aliquot for long-term storage at -20°C/-80°C. Our default final concentration of glycerol is 50%. Customers could use it as reference.

---

### Shelf Life

The shelf life is related to many factors, storage state, buffer ingredients, storage temperature and the stability of the protein itself.

Generally, the shelf life of liquid form is 6 months at -20°C/-80°C. The shelf life of lyophilized form is 12 months at -20°C/-80°C.