



# Recombinant Human Autophagy-related protein 16-1 (ATG16L1)

|                          |   |
|--------------------------|---|
| <b>Product Code</b>      | CSB-EP734569HU  |
| <b>Relevance</b>         | Plays an essential role in autophagy: interacts with ATG12-ATG5 to mediate the conjugation of phosphatidylethanolamine (PE) to LC3 (MAP1LC3A, MAP1LC3B or MAP1LC3C), to produce a mbrane-bound activated form of LC3 named LC3-II. Thereby, controls the elongation of the nascent autophagosomal mbrane.   |
| <b>Abbreviation</b>      | Recombinant Human ATG16L1 protein   |
| <b>Storage</b>           | The shelf life is related to many factors, storage state, buffer ingredients, storage temperature and the stability of the protein itself. Generally, the shelf life of liquid form is 6 months at -20°C/-80°C. The shelf life of lyophilized form is 12 months at -20°C/-80°C.   |
| <b>Uniprot No.</b>       | Q676U5  |
| <b>Alias</b>             | APG16-like 1  |
| <b>Product Type</b>      | Recombinant Protein   |
| <b>Immunogen Species</b> | Homo sapiens (Human)  |
| <b>Purity</b>            | Greater than 90% as determined by SDS-PAGE.   |
| <b>Sequence</b>          | MSSGLRAADFPRWKRHISEQLRRRDRLQRQAFEEIILQYNKLEKSDLHSVLA<br>QKLQAEKHDVPNRHEISPGHDGTWNDNQLQEMAQLRIKHQEELTELHKKRGE<br>LAQLVIDLNNQMQRKDREMQMNEAKIAECLQTISDLETECLDLRTKLCDLERA<br>NQTLKDEYDALQITFTALEGKLRKTTEENQELVTRWMAEKAQEANRLNAENEK<br>DSRRRQARLQKELAEAAKEPLPVEQDDIEVIVDETSDHTEETSPVRAISRAAT<br>KRLSQPAGLLDSITNIFGRRSVSSFPVPQDNVDTHPGSGKEVRVPATALCVF<br>DAHDGEVNAVQFSPGSRLLATGGMDRRVKLWEVFGKECFKGSLSGSNAGIT<br>SIEFDSAGSYLLAASNDFASRIWTVDDYRLRHTLTGHSGKVLSAKFLLDNARIV<br>SGSHDRTLKLWDLRSKVCIKTVFAGSSCNDIVCTEQCVMSGHFDKKIRFWDIR<br>SESIVREMELLGKITALDLNPERTELLSCSRDILLKVIDLRTNAIKQTF SAPGFK<br>CGSDWTRVVFSPDGSYVAAGSAEGSLYIWSVLTGKVEKVLKQHSINAVA<br>WSPSGSHVVSVDKGCKAVLWAQY |
| <b>Research Area</b>     | Cancer  |
| <b>Source</b>            | E.coli  |
| <b>Target Names</b>      | ATG16L1   |
| <b>Protein Names</b>     | Recommended name: Autophagy-related protein 16-1 Alternative name(s): APG16-like 1  |
| <b>Expression Region</b> | 1-607aa   |
| <b>Notes</b>             | Repeated freezing and thawing is not recommended. Store working aliquots at 4°C for up to one week.   |
| <b>Tag Info</b>          | N-terminal 6xHis-SUMO-tagged  |



---

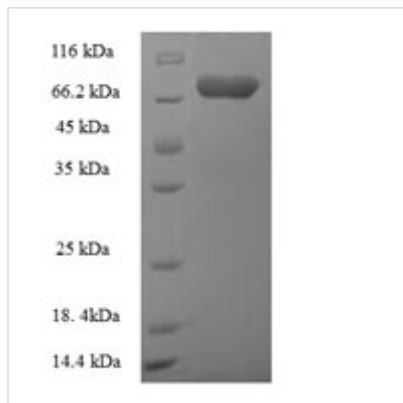
**Mol. Weight** 84.3kDa

---

**Protein Length** Full Length

---

**Image**



(Tris-Glycine gel) Discontinuous SDS-PAGE (reduced) with 5% enrichment gel and 15% separation gel.

---

**Reconstitution**

We recommend that this vial be briefly centrifuged prior to opening to bring the contents to the bottom. Please reconstitute protein in deionized sterile water to a concentration of 0.1-1.0 mg/mL. We recommend to add 5-50% of glycerol (final concentration) and aliquot for long-term storage at -20°C/-80°C. Our default final concentration of glycerol is 50%. Customers could use it as reference.

---

**Shelf Life**

The shelf life is related to many factors, storage state, buffer ingredients, storage temperature and the stability of the protein itself. Generally, the shelf life of liquid form is 6 months at -20°C/-80°C. The shelf life of lyophilized form is 12 months at -20°C/-80°C.