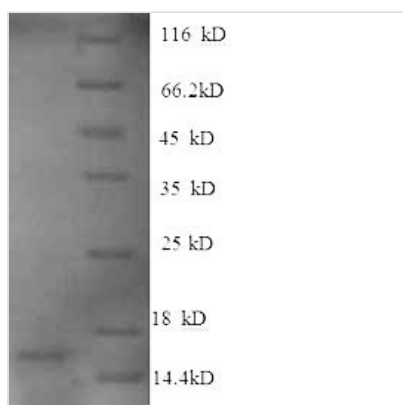




Recombinant Human Growth/differentiation factor 15 (GDF15), partial

Product Code	CSB-EP859530HU
Abbreviation	Recombinant Human GDF15 protein, partial
Storage	The shelf life is related to many factors, storage state, buffer ingredients, storage temperature and the stability of the protein itself. Generally, the shelf life of liquid form is 6 months at -20°C/-80°C. The shelf life of lyophilized form is 12 months at -20°C/-80°C.
Uniprot No.	Q99988
Alias	Macrophage inhibitory cytokine 1 ;MIC-1NSAID-activated gene 1 protein ;NAG-1NSAID-regulated gene 1 protein ;NRG-1;Placental TGF-betaPlacental bone morphogenetic protein;Prostate differentiation factor
Product Type	Recombinant Protein
Immunogen Species	Homo sapiens (Human)
Purity	≥ 90% as determined by SDS-PAGE.
Sequence	RNGDHCPLGPGRCCRLHTVRASLEDLGWADWVLSPREVQVTMCIGACPSQF RAANMHAQIKTSLHRLKPDTVPAPCCVPASYNPMVLIQKTDGTGVSLSLQTYDDL AKDCHCI
Research Area	Cardiovascular
Source	E.coli
Target Names	GDF15
Expression Region	198-308aa
Notes	Repeated freezing and thawing is not recommended. Store working aliquots at 4°C for up to one week.
Tag Info	N-terminal 6xHis-tagged
Mol. Weight	16.2kDa
Protein Length	Partial

Image



(Tris-Glycine gel) Discontinuous SDS-PAGE (reduced) with 5% enrichment gel and 15% separation gel.



Reconstitution

We recommend that this vial be briefly centrifuged prior to opening to bring the contents to the bottom. Please reconstitute protein in deionized sterile water to a concentration of 0.1-1.0 mg/mL. We recommend to add 5-50% of glycerol (final concentration) and aliquot for long-term storage at -20°C/-80°C. Our default final concentration of glycerol is 50%. Customers could use it as reference.

Shelf Life

The shelf life is related to many factors, storage state, buffer ingredients, storage temperature and the stability of the protein itself. Generally, the shelf life of liquid form is 6 months at -20°C/-80°C. The shelf life of lyophilized form is 12 months at -20°C/-80°C.