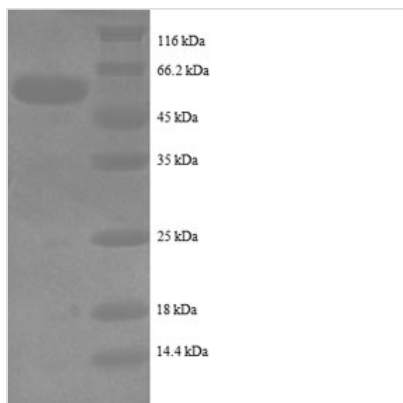




Recombinant Human Intestinal-type alkaline phosphatase (ALPI), partial

Product Code	CSB-EP001627HU1
Storage	The shelf life is related to many factors, storage state, buffer ingredients, storage temperature and the stability of the protein itself. Generally, the shelf life of liquid form is 6 months at -20°C/-80°C. The shelf life of lyophilized form is 12 months at -20°C/-80°C.
Uniprot No.	P09923
Product Type	Recombinant Proteins
Immunogen Species	Homo sapiens (Human)
Purity	Greater than 90% as determined by SDS-PAGE.
Sequence	ENPAFWNRQAAEALDAAKQLQPIQKVAKNLILFLGDGLGVPTVTATRILKGQKN GKLGPEPLAMDRFPYLALSPTYNVDRQVPDSAATATAYLCGVKANFQTIGLS AAARFNQCNTTRGNEVISVMNRAKQAGKSVGVTTRVQHASPAGTYAHTVN RNWYSDADMPASARQEGCQDIATQLISNMDIDVILGGGRKYMFPMPGTPDPEY PADASQNGIRLDGKNLVQEWLAKHQGAWYVWNRTELMQASLDQSVTHLMGL FEPGDTKYEIHRDPTLDPSLMEMTEAALRLLSRNPRGFYLFVEGGRIDHGHHE GVAYQALTEAVMFDDAIERAGQLTSEEDTLTLVTADHSHVFSFGGYTLRGSSIF GLAPSKAQDSKAYTSILYGNGPGYVFNSGVRPDVNESESGSPDYQQQAAVPL SSETHGGEDVAVFARGPQAHLVHGVQEQS FVAHVMAFAACLEPYTACDLAPP AC
Research Area	Signal Transduction
Source	E.coli
Target Names	ALPI
Expression Region	26-500aa
Notes	Repeated freezing and thawing is not recommended. Store working aliquots at 4°C for up to one week.
Tag Info	N-terminal 6xHis-tagged
Mol. Weight	55.5kDa
Protein Length	Partial
Image	



(Tris-Glycine gel) Discontinuous SDS-PAGE (reduced) with 5% enrichment gel and 15% separation gel.

Description

In e.coli cells, the generation of recombinant Human ALPI protein involves cloning a DNA fragment encoding the Human ALPI protein (26-500aa) into a plasmid vector, which is then transferred into the e.coli cells. Positive cells are selected, cultured, and induced to express the ALPI protein. A N-terminal 6xHis tag is attached to the protein. Lysis of the cells allows for the harvest of the recombinant Human ALPI protein. The collected recombinant Human ALPI protein is subjected to affinity purification and is identified using SDS-PAGE and subsequent staining of the gel with Coomassie Brilliant Blue. Its purity is greater than 90%.

Shelf Life

The shelf life is related to many factors, storage state, buffer ingredients, storage temperature and the stability of the protein itself. Generally, the shelf life of liquid form is 6 months at -20°C/-80°C. The shelf life of lyophilized form is 12 months at -20°C/-80°C.