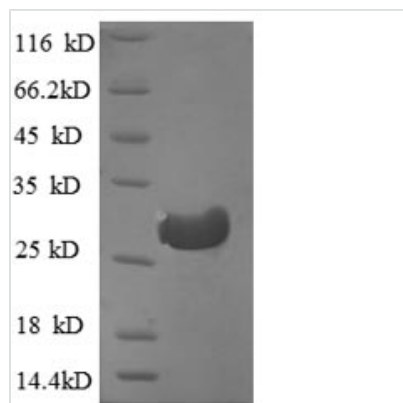




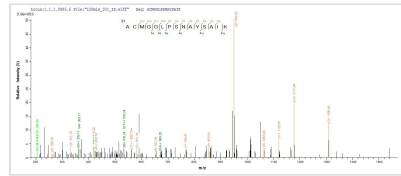
# Recombinant Human Cathepsin F (CTSF), partial

<b>Product Code</b>	CSB-EP006189HU1
<b>Relevance</b>	Thiol protease which is believed to participate in intracellular degradation and turnover of proteins. Has also been implicated in tumor invasion and metastasis.
<b>Abbreviation</b>	Recombinant Human CTSF protein, partial
<b>Storage</b>	The shelf life is related to many factors, storage state, buffer ingredients, storage temperature and the stability of the protein itself. Generally, the shelf life of liquid form is 6 months at -20°C/-80°C. The shelf life of lyophilized form is 12 months at -20°C/-80°C.
<b>Uniprot No.</b>	Q9UBX1
<b>Product Type</b>	Recombinant Proteins
<b>Immunogen Species</b>	Homo sapiens (Human)
<b>Purity</b>	Greater than 90% as determined by SDS-PAGE.
<b>Sequence</b>	PEWDWRSKGAVTKVKDQGMCGSCWAFSVTGNVEGQWFLNQGTLTLLSLSEQE LLDCDKMDKACMGGLPSNAYSIAIKNLGGLETEDDYSYQGHMQSCNFSAEKAK VYINDSVELSQNEQKLAAWLAKRGPISVAINAFGMQFYRHGISRPLRPLCSPW LIDHAVLLVGYGNRSDVPFWAIKNSWGTDWGEKGYYYLHRGSGACGVNTMA SSAVVD
<b>Research Area</b>	Immunology
<b>Source</b>	E.coli
<b>Target Names</b>	CTSF
<b>Expression Region</b>	273-484aa
<b>Notes</b>	Repeated freezing and thawing is not recommended. Store working aliquots at 4°C for up to one week.
<b>Tag Info</b>	N-terminal 6xHis-tagged
<b>Mol. Weight</b>	30.3 kDa
<b>Protein Length</b>	Partial

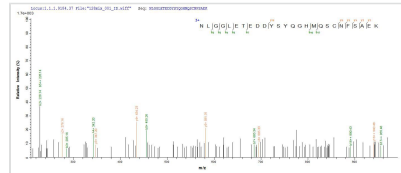
## Image



(Tris-Glycine gel) Discontinuous SDS-PAGE (reduced) with 5% enrichment gel and 15% separation gel.



Based on the SEQUEST from database of E.coli host and target protein, the LC-MS/MS Analysis result of CSB-RP152794h could indicate that this peptide derived from E.coli-expressed Homo sapiens (Human) CTSF.



Based on the SEQUEST from database of E.coli host and target protein, the LC-MS/MS Analysis result of CSB-RP152794h could indicate that this peptide derived from E.coli-expressed Homo sapiens (Human) CTSF.

### Shelf Life

The shelf life is related to many factors, storage state, buffer ingredients, storage temperature and the stability of the protein itself.

Generally, the shelf life of liquid form is 6 months at -20°C/-80°C. The shelf life of lyophilized form is 12 months at -20°C/-80°C.