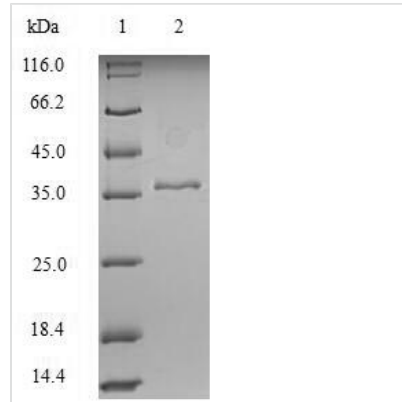




Recombinant Human KeRatin, type I cytoskeletal 18 (KRT18), partial

Product Code	CSB-EP012519HU2
Relevance	Involved in the uptake of thrombin-antithrombin complexes by hepatic cells . When phosphorylated, plays a role in filament reorganization. Involved in the delivery of mutated CFTR to the plasma mbrane. Together with KRT8, is involved in interleukin-6 (IL-6)-mediated barrier protection
Abbreviation	Recombinant Human KRT18 protein, partial
Storage	The shelf life is related to many factors, storage state, buffer ingredients, storage temperature and the stability of the protein itself. Generally, the shelf life of liquid form is 6 months at -20°C/-80°C. The shelf life of lyophilized form is 12 months at -20°C/-80°C.
Uniprot No.	P05783
Alias	Cell proliferation-inducing gene 46 protein;Cytokeratin-18 ;CK-18Keratin-18 ;K18
Product Type	Recombinant Protein
Immunogen Species	Homo sapiens (Human)
Purity	Greater than 90% as determined by SDS-PAGE.
Sequence	ETENRRLESKIREHLEKKGPQVRDWSHYFKIIEDLRAQIFANTVDNARIVLQIDN ARLAADDFRVKYETELAMRQSVENDIHGLRKVIDDTNITRLQLETEIEALKEELL FMKKNHEEEVKGLQAQIASSGLTVEVDAPKSQDLAKIMADIRAQYDELARKNR EELDKYWSQQIEESTTVTTQSAEVGAAETTLTELRRRTVQSLEIDLDSMRNLKA SLENSLREVEARYALQMEQLNGILLHLESELAQTRAEGQRQAQEYEALLNIKVK LEAEIATYRRLLEDGEDFNLDAL
Research Area	Cell Cycle
Source	E.coli
Target Names	KRT18
Expression Region	102-396aa
Notes	Repeated freezing and thawing is not recommended. Store working aliquots at 4°C for up to one week.
Tag Info	N-terminal 6xHis-tagged
Mol. Weight	38.0kDa
Protein Length	Partial
Image	



(Tris-Glycine gel) Discontinuous SDS-PAGE (reduced) with 5% enrichment gel and 15% separation gel.

Reconstitution

We recommend that this vial be briefly centrifuged prior to opening to bring the contents to the bottom. Please reconstitute protein in deionized sterile water to a concentration of 0.1-1.0 mg/mL. We recommend to add 5-50% of glycerol (final concentration) and aliquot for long-term storage at -20°C/-80°C. Our default final concentration of glycerol is 50%. Customers could use it as reference.

Shelf Life

The shelf life is related to many factors, storage state, buffer ingredients, storage temperature and the stability of the protein itself. Generally, the shelf life of liquid form is 6 months at -20°C/-80°C. The shelf life of lyophilized form is 12 months at -20°C/-80°C.