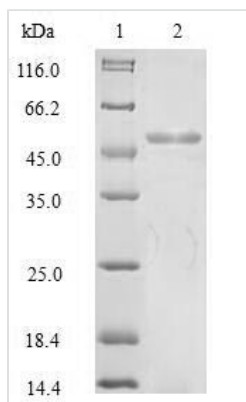




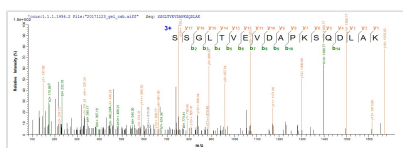
Recombinant Human KeRatin, type I cytoskeletal 18 (KRT18), partial

Product Code	CSB-EP012519HU1
Abbreviation	Recombinant Human KRT18 protein, partial
Storage	The shelf life is related to many factors, storage state, buffer ingredients, storage temperature and the stability of the protein itself. Generally, the shelf life of liquid form is 6 months at -20°C/-80°C. The shelf life of lyophilized form is 12 months at -20°C/-80°C.
Uniprot No.	P05783
Product Type	Recombinant Protein
Immunogen Species	Homo sapiens (Human)
Purity	>85% (SDS-PAGE)
Sequence	TNYRSLGSVQAPSYGARPVSSAASVYAGAGGSGSRISVSRSTSFRRGGMGSG GLATGIAGGLAGMGGIQNEKETMQSLNDRLASYLDRVRSLETENRRLESKIRE HLEKKGPPQVRDWSHYFKIIEDLRAQIFANTVDNARIVLQIDNARLAADDFRVKY ETELAMRQSVENDIHGLRKVIDDTNITRLQLETEIEALKEELLFMKKNHEEEVKG LQAQIASSGLTVEVDAPKSQDLAKIMADIRAQYDELARKNREELDKYWSQQIEE STTVVTTQSAEVGAAETTLTELRRTVQSLEIDLDSMRNLKASLENSLREVEARY ALQMEQLNGILLHLESELAQTRAEGQRQAQEQYEALLNIKVKLEAEIATYRRLE DGEDFNLGDALDSSNSMQTIQKTTTRRIVDGKVVSETNDTKVLRH
Source	E.coli
Target Names	KRT18, CYK18, PIG46, 18 100-396AA(M30-TPA)TPA/TPS
Expression Region	11-430aa
Notes	Repeated freezing and thawing is not recommended. Store working aliquots at 4°C for up to one week.
Tag Info	His-tag
Protein Length	Partial of the full length of 2-430aa

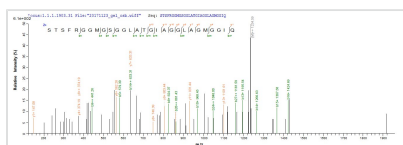
Image



(Tris-Glycine gel) Discontinuous SDS-PAGE (reduced) with 5% enrichment gel and 15% separation gel.



Based on the SEQUEST from database of E.coli host and target protein, the LC-MS/MS Analysis result of CSB-EP012519HU1 could indicate that this peptide derived from E.coli-expressed Homo sapiens (Human) KRT18.



Based on the SEQUEST from database of E.coli host and target protein, the LC-MS/MS Analysis result of CSB-EP012519HU1 could indicate that this peptide derived from E.coli-expressed Homo sapiens (Human) KRT18.

Reconstitution

We recommend that this vial be briefly centrifuged prior to opening to bring the contents to the bottom. Please reconstitute protein in deionized sterile water to a concentration of 0.1-1.0 mg/mL. We recommend to add 5-50% of glycerol (final concentration) and aliquot for long-term storage at -20°C/-80°C. Our default final concentration of glycerol is 50%. Customers could use it as reference.

Shelf Life

The shelf life is related to many factors, storage state, buffer ingredients, storage temperature and the stability of the protein itself. Generally, the shelf life of liquid form is 6 months at -20°C/-80°C. The shelf life of lyophilized form is 12 months at -20°C/-80°C.