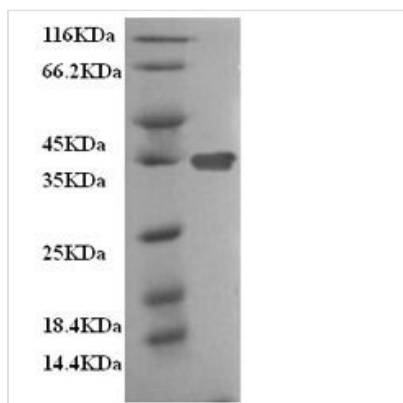




Recombinant Mouse Clathrin light chain A (Clta)

Product Code	CSB-MP005591MO
Relevance	Clathrin is the major protein of the polyhedral coat of coated pits and vesicles.
Abbreviation	Recombinant Mouse Clta protein
Storage	The shelf life is related to many factors, storage state, buffer ingredients, storage temperature and the stability of the protein itself. Generally, the shelf life of liquid form is 6 months at -20°C/-80°C. The shelf life of lyophilized form is 12 months at -20°C/-80°C.
Uniprot No.	O08585
Product Type	Recombinant Protein
Immunogen Species	Mus musculus (Mouse)
Purity	Greater than 90% as determined by SDS-PAGE.
Sequence	MAELDPFGAPAGAPGGPALGNGVAGAGEEDPAAAFLAQQESEIAGIENDEAF AILDGGAPGRATRRRAAGGPDVDGVMNGEYYQESNGPTDSYAAISEVDRLQS EPESIRKWREEQTERLEALDANSRKQEA EWKEKAIKELEEWYARQDEQLQKT KANNRVADEAFYKQPFADLIGYVAAEEAFVNDIDESSPGTEWERVARLCDFNP KSSKQAKDVSRRMSVLSLKLQAPLVH
Research Area	Others
Source	Mammalian cell
Target Names	Clta
Expression Region	1-235aa
Notes	Repeated freezing and thawing is not recommended. Store working aliquots at 4°C for up to one week.
Tag Info	N-terminal 6xHis-tagged and Flag-tagged
Mol. Weight	31.1kDa
Protein Length	Full Length

Image



(Tris-Glycine gel) Discontinuous SDS-PAGE (reduced) with 5% enrichment gel and 15% separation gel.

Reconstitution

We recommend that this vial be briefly centrifuged prior to opening to bring the



contents to the bottom. Please reconstitute protein in deionized sterile water to a concentration of 0.1-1.0 mg/mL. We recommend to add 5-50% of glycerol (final concentration) and aliquot for long-term storage at -20°C/-80°C. Our default final concentration of glycerol is 50%. Customers could use it as reference.

Shelf Life

The shelf life is related to many factors, storage state, buffer ingredients, storage temperature and the stability of the protein itself.

Generally, the shelf life of liquid form is 6 months at -20°C/-80°C. The shelf life of lyophilized form is 12 months at -20°C/-80°C.