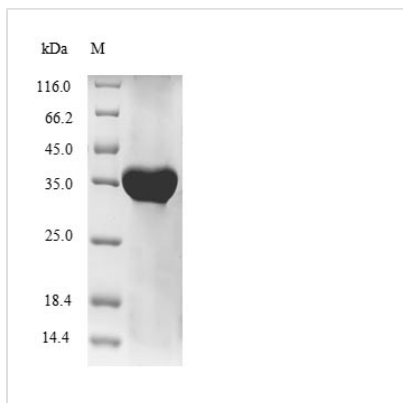


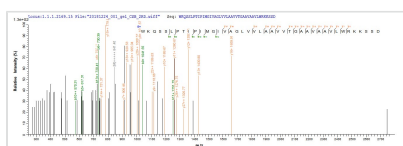


# Recombinant Human HLA class I histocompatibility antigen, alpha chain G (HLAG)

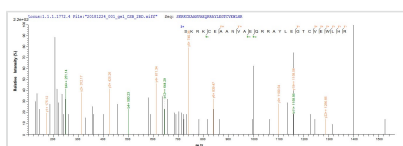
<b>Product Code</b>	CSB-EP010509HU
<b>Relevance</b>	Involved in the presentation of foreign antigens to the immune system. Plays a role in maternal tolerance of the fetus by mediating protection from the deleterious effects of natural killer cells, cytotoxic T-lymphocytes, macrophages and mononuclear cells.
<b>Abbreviation</b>	Recombinant Human HLA-G protein
<b>Storage</b>	The shelf life is related to many factors, storage state, buffer ingredients, storage temperature and the stability of the protein itself. Generally, the shelf life of liquid form is 6 months at -20°C/-80°C. The shelf life of lyophilized form is 12 months at -20°C/-80°C.
<b>Uniprot No.</b>	P17693
<b>Storage Buffer</b>	Tris-based buffer,50% glycerol
<b>Product Type</b>	Recombinant Protein
<b>Immunogen Species</b>	Homo sapiens (Human)
<b>Purity</b>	Greater than 85% as determined by SDS-PAGE.
<b>Sequence</b>	<p>           GSHSMRYFSAAVSRPGRGEPFIAMGYVDDTQFVRFSDSACPRMEPRAPW            VEQEGPEYWEEETRNTKAHAQTDRMNLQTLRGYYNQSEASSHTLQWMIGCD            LGSDGRLLRGYEQYAYDGKDYALNEDLRSWTAADTAAQISKRKCEANVAE            QRRAYLEGTCVEWLHRYLENGKEMLQRADPPKTHVTHHPVFDYEATLRCWA            LGFYPAEIIITWQRDGEDQTQDVELVETRPAGDGTGFKWAAVVVPSGEEQRY            TCHVQHEGLPEPLMLRWKQSSLPTIPIMGIVAGLVVLAAVVTGAAVA AVLWRK            KSSD         </p>
<b>Research Area</b>	Immunology
<b>Source</b>	E.coli
<b>Target Names</b>	HLA-G
<b>Protein Names</b>	HLA G antigenMHC class I antigen G
<b>Expression Region</b>	25-338aa
<b>Notes</b>	Repeated freezing and thawing is not recommended. Store working aliquots at 4°C for up to one week.
<b>Tag Info</b>	N-terminal 6xHis-tagged
<b>Mol. Weight</b>	39.6 kDa
<b>Protein Length</b>	Full Length of Mature Protein
<b>Image</b>	



(Tris-Glycine gel) Discontinuous SDS-PAGE (reduced) with 5% enrichment gel and 15% separation gel.



Based on the SEQUEST from database of E.coli host and target protein, the LC-MS/MS Analysis result of CSB-EP010509HU could indicate that this peptide derived from E.coli-expressed Homo sapiens (Human) HLA-G.



Based on the SEQUEST from database of E.coli host and target protein, the LC-MS/MS Analysis result of CSB-EP010509HU could indicate that this peptide derived from E.coli-expressed Homo sapiens (Human) HLA-G.

## Reconstitution

We recommend that this vial be briefly centrifuged prior to opening to bring the contents to the bottom. Please reconstitute protein in deionized sterile water to a concentration of 0.1-1.0 mg/mL. We recommend to add 5-50% of glycerol (final concentration) and aliquot for long-term storage at -20°C/-80°C. Our default final concentration of glycerol is 50%. Customers could use it as reference.

## Shelf Life

The shelf life is related to many factors, storage state, buffer ingredients, storage temperature and the stability of the protein itself.

Generally, the shelf life of liquid form is 6 months at -20°C/-80°C. The shelf life of lyophilized form is 12 months at -20°C/-80°C.