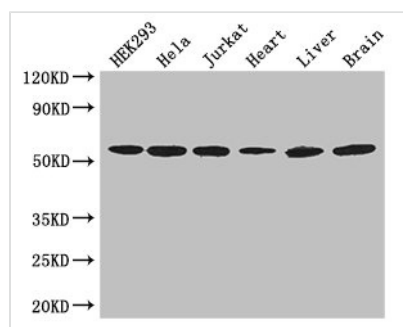




# ARIH2 Antibody

<b>Product Code</b>	CSB-PA002069LA01HU
<b>Storage</b>	Upon receipt, store at -20°C or -80°C. Avoid repeated freeze.
<b>Uniprot No.</b>	O95376
<b>Immunogen</b>	Recombinant Human E3 ubiquitin-protein ligase ARIH2 protein (43-360AA)
<b>Raised In</b>	Rabbit
<b>Species Reactivity</b>	Human, Mouse
<b>Tested Applications</b>	ELISA, WB, IHC; Recommended dilution: WB:1:2000-1:5000, IHC:1:20-1:200
<b>Form</b>	Liquid
<b>Conjugate</b>	Non-conjugated
<b>Storage Buffer</b>	Preservative: 0.03% Proclin 300 Constituents: 50% Glycerol, 0.01M PBS, PH 7.4
<b>Purification Method</b>	>95%, Protein G purified
<b>Isotype</b>	IgG
<b>Clonality</b>	Polyclonal
<b>Alias</b>	E3 ubiquitin-protein ligase ARIH2 (ARI-2) (Protein ariadne-2 homolog) (EC 2.3.2.27) (RING-type E3 ubiquitin transferase ARIH2) (Triad1 protein), ARIH2, ARI2 TRIAD1
<b>Immunogen Species</b>	Homo sapiens (Human)
<b>Research Area</b>	Epigenetics and Nuclear Signaling
<b>Target Names</b>	ARIH2

## Image



### Western Blot

Positive WB detected in: HEK293 whole cell lysate, HeLa whole cell lysate, Jurkat whole cell lysate, Mouse heart tissue, Mouse liver tissue, Mouse brain tissue

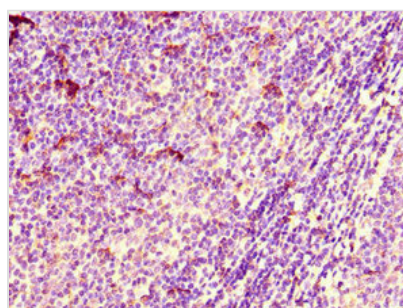
All lanes: ARIH2 antibody at 3µg/ml

Secondary

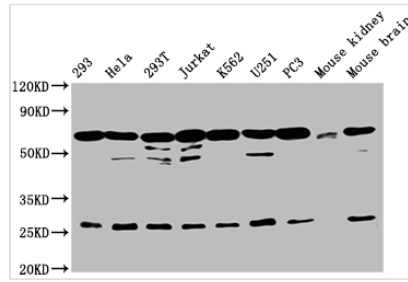
Goat polyclonal to rabbit IgG at 1/50000 dilution

Predicted band size: 58 kDa

Observed band size: 58 kDa



Immunohistochemistry of paraffin-embedded human lymph node tissue using CSB-PA002069LA01HU at dilution of 1:100

**Western Blot**

Positive WB detected in: 293 whole cell lysate, HeLa whole cell lysate, 293T whole cell lysate, Jurkat whole cell lysate, K562 whole cell lysate, U251 whole cell lysate, PC-3 whole cell lysate, Mouse kidney tissue, Mouse brain tissue

All lanes: ARIH2 antibody at 1:2000

Secondary

Goat polyclonal to rabbit IgG at 1/50000 dilution

Predicted band size: 58 kDa

Observed band size: 68 kDa

**Usage**

For Research Use Only. Not for use in diagnostic or therapeutic procedures.