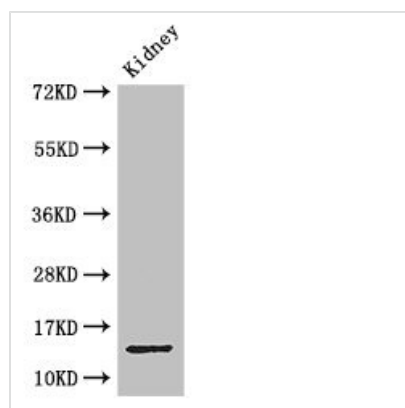




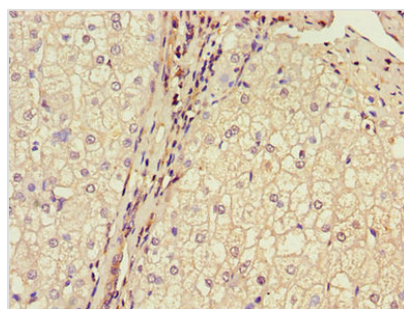
MPC2 Antibody

Product Code	CSB-PA002816LA01HU
Storage	Upon receipt, store at -20°C or -80°C. Avoid repeated freeze.
Uniprot No.	O95563
Immunogen	Recombinant Human Mitochondrial pyruvate carrier 2 protein (1-40AA)
Raised In	Rabbit
Species Reactivity	Human, Mouse
Tested Applications	ELISA, WB, IHC; Recommended dilution: WB:1:1000-1:5000, IHC:1:20-1:200
Form	Liquid
Conjugate	Non-conjugated
Storage Buffer	Preservative: 0.03% Proclin 300 Constituents: 50% Glycerol, 0.01M PBS, PH 7.4
Purification Method	>95%, Protein G purified
Isotype	IgG
Clonality	Polyclonal
Alias	Mitochondrial pyruvate carrier 2 (Brain protein 44), MPC2, BRP44
Immunogen Species	Homo sapiens (Human)
Research Area	Cell Biology
Target Names	MPC2

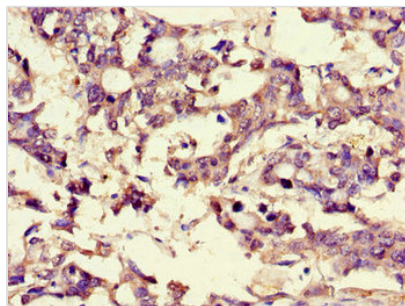
Image



Western Blot
Positive WB detected in: Mouse kidney tissue
All lanes: MPC2 antibody at 3.4µg/ml
Secondary
Goat polyclonal to rabbit IgG at 1/50000 dilution
Predicted band size: 15 kDa
Observed band size: 15 kDa



Immunohistochemistry of paraffin-embedded human liver cancer using CSB-PA002816LA01HU at dilution of 1:100



Immunohistochemistry of paraffin-embedded human gastric cancer using CSB-PA002816LA01HU at dilution of 1:100