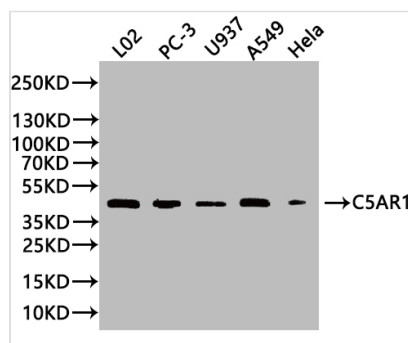




# C5AR1 Antibody

<b>Product Code</b>	CSB-PA003996LA01HU
<b>Storage</b>	Upon receipt, store at -20°C or -80°C. Avoid repeated freeze.
<b>Uniprot No.</b>	P21730
<b>Immunogen</b>	Recombinant Human C5a anaphylatoxin chemotactic receptor 1 protein (1-36AA)
<b>Raised In</b>	Rabbit
<b>Species Reactivity</b>	Human
<b>Tested Applications</b>	ELISA, WB, IHC; Recommended dilution: WB:1:1000-1:3000, IHC:1:500-1:1000
<b>Form</b>	Liquid
<b>Conjugate</b>	Non-conjugated
<b>Storage Buffer</b>	0.03% Proclin 300 Constituents: 50% Glycerol, 0.01M PBS, pH 7.4
<b>Purification Method</b>	>95%, Protein G purified
<b>Isotype</b>	IgG
<b>Clonality</b>	Polyclonal
<b>Product Type</b>	Polyclonal Antibody
<b>Immunogen Species</b>	Homo sapiens (Human)
<b>Research Area</b>	Immunology
<b>Target Names</b>	C5AR1

## Image

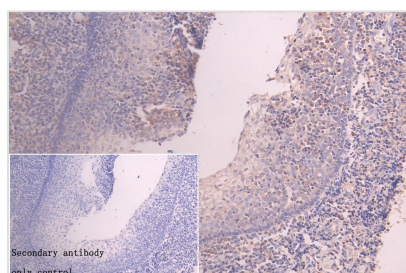


### Western Blot

Positive WB detected in: L02 whole cell lysate(20µg), PC-3 whole cell lysate(20µg), U937 whole cell lysate(20µg), A549 whole cell lysate(20µg), HeLa whole cell lysate(20µg)  
All lanes: C5AR1 antibody at 1:1000

### Secondary

Goat polyclonal to rabbit IgG at 1/50000 dilution  
Predicted band size: 40 kDa  
Observed band size:40 kDa  
Exposure time?10s



IHC image of CSB-PA003996LA01HU diluted at 1:600 and staining in paraffin-embedded human tonsil tissue performed on a Leica Bond™ system. After dewaxing and hydration, antigen retrieval was mediated by high pressure in a citrate buffer (pH 6.0). Section was blocked with 10% normal goat serum 30min at RT. Then primary antibody (1% BSA) was incubated at 4°C overnight. The primary is detected by a Goat anti-rabbit polymer IgG labeled by HRP and



visualized using 0.05% DAB. Secondary antibody only control: uses 1% BSA instead of primary antibody

---

**Usage**

For Research Use Only. Not for use in diagnostic or therapeutic procedures.