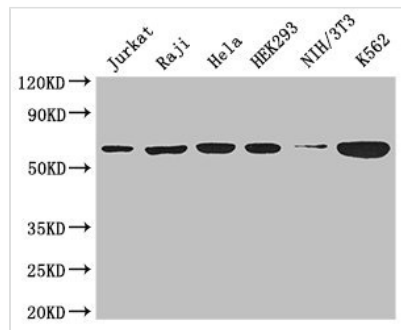




# CCT8 Antibody

<b>Product Code</b>	CSB-PA004873LA01HU
<b>Storage</b>	Upon receipt, store at -20°C or -80°C. Avoid repeated freeze.
<b>Uniprot No.</b>	P50990
<b>Immunogen</b>	Recombinant Human T-complex protein 1 subunit theta protein (224-491AA)
<b>Raised In</b>	Rabbit
<b>Species Reactivity</b>	Human, Mouse
<b>Tested Applications</b>	ELISA, WB, IHC, IF; Recommended dilution: WB:1:1000-1:5000, IHC:1:20-1:200, IF:1:50-1:200
<b>Form</b>	Liquid
<b>Conjugate</b>	Non-conjugated
<b>Storage Buffer</b>	Preservative: 0.03% Proclin 300 Constituents: 50% Glycerol, 0.01M PBS, PH 7.4
<b>Purification Method</b>	>95%, Protein G purified
<b>Isotype</b>	IgG
<b>Clonality</b>	Polyclonal
<b>Alias</b>	T-complex protein 1 subunit theta (TCP-1-theta) (CCT-theta) (Chaperonin containing T-complex polypeptide 1 subunit 8) (Renal carcinoma antigen NY-REN-15), CCT8, C21orf112 CCTQ KIAA0002
<b>Immunogen Species</b>	Homo sapiens (Human)
<b>Research Area</b>	Signal Transduction
<b>Target Names</b>	CCT8

## Image



### Western Blot

Positive WB detected in: Jurkat whole cell lysate, Raji whole cell lysate, HeLa whole cell lysate, HEK293 whole cell lysate, NIH/3T3 whole cell lysate, K562 whole cell lysate

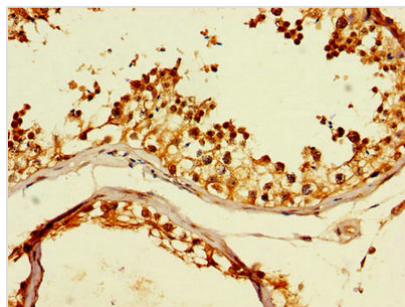
All lanes: CCT8 antibody at 3µg/ml

### Secondary

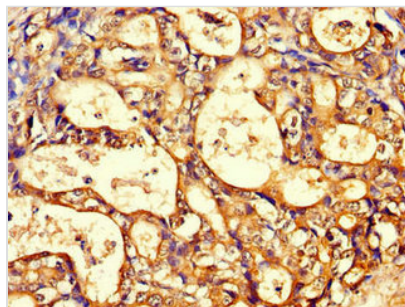
Goat polyclonal to rabbit IgG at 1/50000 dilution

Predicted band size: 60, 58, 52 kDa

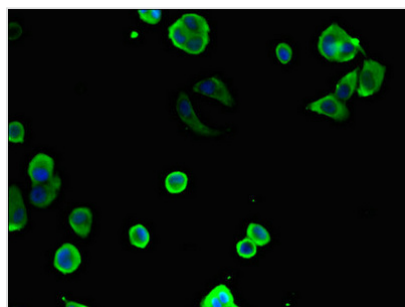
Observed band size: 60 kDa



Immunohistochemistry of paraffin-embedded human testis tissue using CSB-PA004873LA01HU at dilution of 1:100



Immunohistochemistry of paraffin-embedded human gastric cancer using CSB-PA004873LA01HU at dilution of 1:100



Immunofluorescent analysis of MCF-7 cells using CSB-PA004873LA01HU at dilution of 1:100 and Alexa Fluor 488-conjugated AffiniPure Goat Anti-Rabbit IgG(H+L)

**Usage**

For Research Use Only. Not for use in diagnostic or therapeutic procedures.