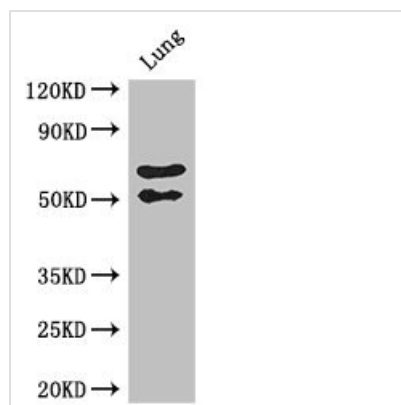




EFEMP2 Antibody

Product Code	CSB-PA007451LA01HU
Storage	Upon receipt, store at -20°C or -80°C. Avoid repeated freeze.
Uniprot No.	O95967
Immunogen	Recombinant Human EGF-containing fibulin-like extracellular matrix protein 2 protein (26-165AA)
Raised In	Rabbit
Species Reactivity	Human, Mouse
Tested Applications	ELISA, WB, IHC; Recommended dilution: WB:1:1000-1:5000, IHC:1:20-1:200
Form	Liquid
Conjugate	Non-conjugated
Storage Buffer	Preservative: 0.03% Proclin 300 Constituents: 50% Glycerol, 0.01M PBS, PH 7.4
Purification Method	>95%, Protein G purified
Isotype	IgG
Clonality	Polyclonal
Alias	EGF-containing fibulin-like extracellular matrix protein 2 (Fibulin-4) (FIBL-4) (Protein UPH1), EFEMP2, FBLN4
Immunogen Species	Homo sapiens (Human)
Research Area	Signal Transduction
Target Names	EFEMP2

Image



Western Blot

Positive WB detected in: Mouse lung tissue

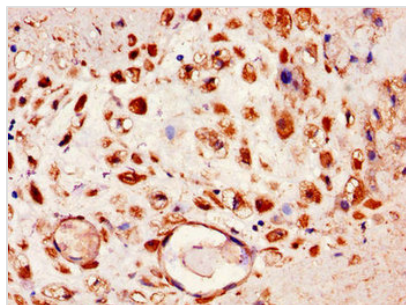
All lanes: EFEMP2 antibody at 2.7µg/ml

Secondary

Goat polyclonal to rabbit IgG at 1/50000 dilution

Predicted band size: 50 kDa

Observed band size: 50, 70 kDa



Immunohistochemistry of paraffin-embedded human placenta tissue using CSB-PA007451LA01HU at dilution of 1:100

Usage

For Research Use Only. Not for use in diagnostic or therapeutic procedures.