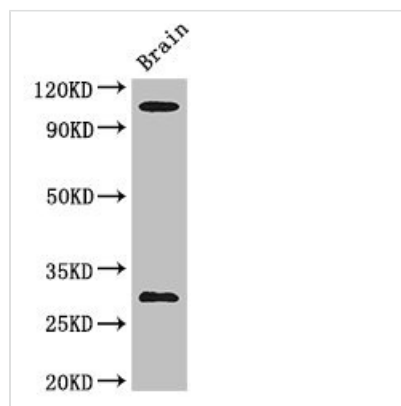




EPHA1 Antibody

Product Code	CSB-PA007720LA01HU
Storage	Upon receipt, store at -20°C or -80°C. Avoid repeated freeze.
Uniprot No.	P21709
Immunogen	Recombinant Human Ephrin type-A receptor 1 protein (296-414AA)
Raised In	Rabbit
Species Reactivity	Human, Mouse
Tested Applications	ELISA, WB, IHC, IF; Recommended dilution: WB:1:1000-1:5000, IHC:1:20-1:200, IF:1:50-1:200
Form	Liquid
Conjugate	Non-conjugated
Storage Buffer	Preservative: 0.03% Proclin 300 Constituents: 50% Glycerol, 0.01M PBS, PH 7.4
Purification Method	>95%, Protein G purified
Isotype	IgG
Clonality	Polyclonal
Alias	Ephrin type-A receptor 1 (hEpha1) (EC 2.7.10.1) (EPH tyrosine kinase) (EPH tyrosine kinase 1) (Erythropoietin-producing hepatoma receptor) (Tyrosine-protein kinase receptor EPH), EPHA1, EPH EPHT EPHT1
Immunogen Species	Homo sapiens (Human)
Research Area	Cardiovascular
Target Names	EPHA1

Image



Western Blot

Positive WB detected in: Mouse brain tissue

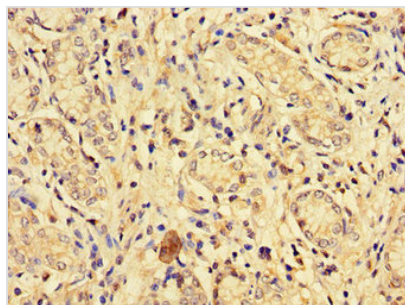
All lanes: EPHA1 antibody at 3µg/ml

Secondary

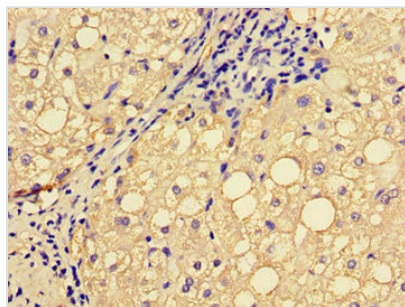
Goat polyclonal to rabbit IgG at 1/50000 dilution

Predicted band size: 109, 53, 52 kDa

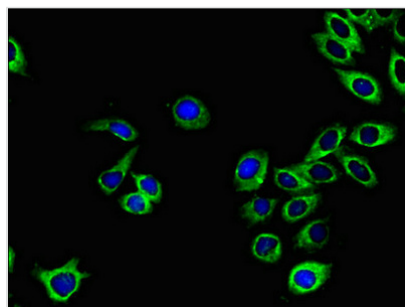
Observed band size: 109, 30 kDa



Immunohistochemistry of paraffin-embedded human gastric cancer using CSB-PA007720LA01HU at dilution of 1:100



Immunohistochemistry of paraffin-embedded human liver cancer using CSB-PA007720LA01HU at dilution of 1:100



Immunofluorescent analysis of A549 cells using CSB-PA007720LA01HU at dilution of 1:100 and Alexa Fluor 488-conjugated AffiniPure Goat Anti-Rabbit IgG(H+L)

Usage

For Research Use Only. Not for use in diagnostic or therapeutic procedures.