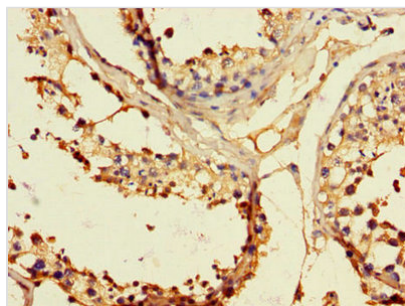




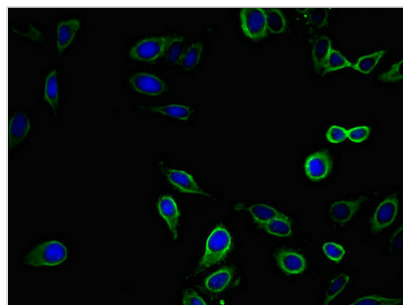
EPHB2 Antibody

Product Code	CSB-PA007730LA01HU
Storage	Upon receipt, store at -20°C or -80°C. Avoid repeated freeze.
Uniprot No.	P29323
Immunogen	Recombinant Human Ephrin type-B receptor 2 protein (261-465AA)
Raised In	Rabbit
Species Reactivity	Human
Tested Applications	ELISA, IHC, IF; Recommended dilution: IHC:1:20-1:200, IF:1:50-1:200
Form	Liquid
Conjugate	Non-conjugated
Storage Buffer	Preservative: 0.03% Proclin 300 Constituents: 50% Glycerol, 0.01M PBS, PH 7.4
Purification Method	>95%, Protein G purified
Isotype	IgG
Clonality	Polyclonal
Alias	Ephrin type-B receptor 2 (EC 2.7.10.1) (Developmentally-regulated Eph-related tyrosine kinase) (ELK-related tyrosine kinase) (EPH tyrosine kinase 3) (EPH-like kinase 5) (EK5) (hEK5) (Renal carcinoma antigen NY-REN-47) (Tyrosine-protein kinase TYRO5) (Tyrosine-protein kinase receptor EPH-3), EPHB2, DRT EPHT3 EPTH3 ERK HEK5 TYRO5
Immunogen Species	Homo sapiens (Human)
Research Area	Cardiovascular
Target Names	EPHB2

Image



Immunohistochemistry of paraffin-embedded human testis tissue using CSB-PA007730LA01HU at dilution of 1:100



Immunofluorescent analysis of HeLa cells using CSB-PA007730LA01HU at dilution of 1:100 and Alexa Fluor 488-conjugated AffiniPure Goat Anti-Rabbit IgG(H+L)