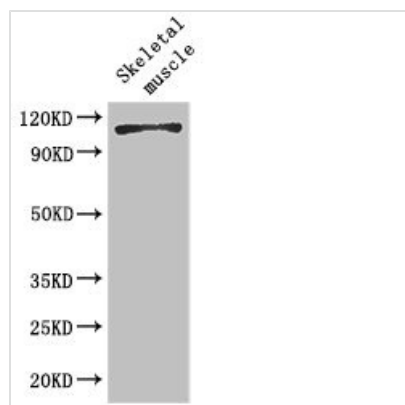




EPHB6 Antibody

Product Code	CSB-PA007733LA01HU
Storage	Upon receipt, store at -20°C or -80°C. Avoid repeated freeze.
Uniprot No.	O15197
Immunogen	Recombinant Human Ephrin type-B receptor 6 protein (410-553AA)
Raised In	Rabbit
Species Reactivity	Human, Mouse
Tested Applications	ELISA, WB, IHC, IF; Recommended dilution: WB:1:1000-1:5000, IHC:1:20-1:200, IF:1:50-1:200
Form	Liquid
Conjugate	Non-conjugated
Storage Buffer	Preservative: 0.03% Proclin 300 Constituents: 50% Glycerol, 0.01M PBS, PH 7.4
Purification Method	>95%, Protein G purified
Isotype	IgG
Clonality	Polyclonal
Alias	Ephrin type-B receptor 6 (HEP) (Tyrosine-protein kinase-defective receptor EPH-6), EPHB6
Immunogen Species	Homo sapiens (Human)
Research Area	Neuroscience
Target Names	EPHB6

Image



Western Blot

Positive WB detected in: Mouse skeletal muscle tissue

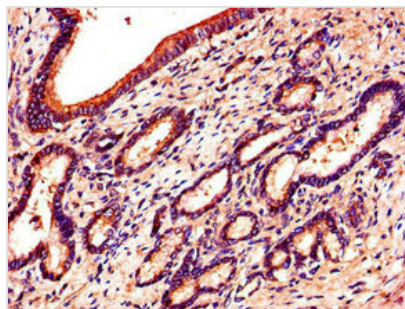
All lanes: EPHB6 antibody at 2μg/ml

Secondary

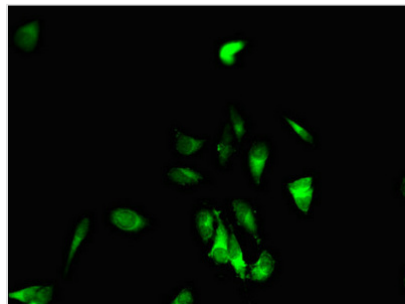
Goat polyclonal to rabbit IgG at 1/50000 dilution

Predicted band size: 111, 82, 58 kDa

Observed band size: 111 kDa



Immunohistochemistry of paraffin-embedded human pancreatic tissue using CSB-PA007733LA01HU at dilution of 1:100



Immunofluorescent analysis of HeLa cells using CSB-PA007733LA01HU at dilution of 1:100 and Alexa Fluor 488-conjugated AffiniPure Goat Anti-Rabbit IgG(H+L)