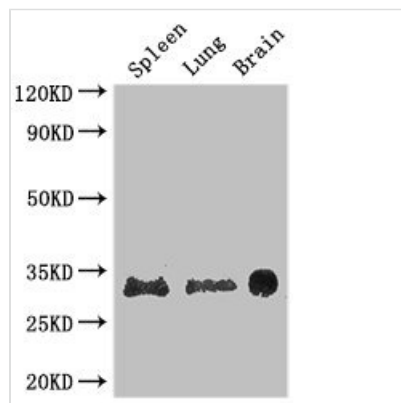




# PITX3 Antibody

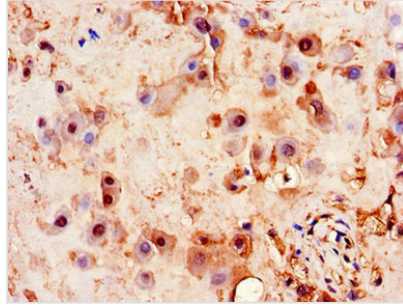
<b>Product Code</b>	CSB-PA010844LA01HU
<b>Storage</b>	Upon receipt, store at -20°C or -80°C. Avoid repeated freeze.
<b>Uniprot No.</b>	O75364
<b>Immunogen</b>	Recombinant Human Pituitary homeobox 3 protein (10-200AA)
<b>Raised In</b>	Rabbit
<b>Species Reactivity</b>	Human, Mouse
<b>Tested Applications</b>	ELISA, WB, IHC; Recommended dilution: WB:1:1000-1:5000, IHC:1:20-1:200
<b>Form</b>	Liquid
<b>Conjugate</b>	Non-conjugated
<b>Storage Buffer</b>	Preservative: 0.03% Proclin 300 Constituents: 50% Glycerol, 0.01M PBS, PH 7.4
<b>Purification Method</b>	>95%, Protein G purified
<b>Isotype</b>	IgG
<b>Clonality</b>	Polyclonal
<b>Alias</b>	Pituitary homeobox 3 (Homeobox protein PITX3) (Paired-like homeodomain transcription factor 3), PITX3, PTX3
<b>Immunogen Species</b>	Homo sapiens (Human)
<b>Research Area</b>	Neuroscience
<b>Target Names</b>	PITX3

## Image

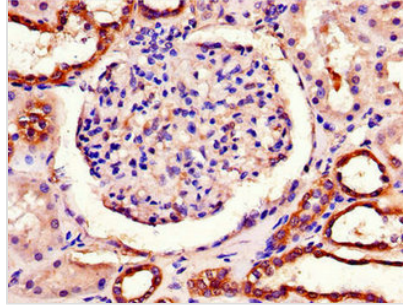


### Western Blot

Positive WB detected in: Mouse spleen tissue, Mouse lung tissue, Mouse brain tissue  
 All lanes: PITX3 antibody at 2.7µg/ml  
 Secondary  
 Goat polyclonal to rabbit IgG at 1/50000 dilution  
 Predicted band size: 32 kDa  
 Observed band size: 32 kDa



Immunohistochemistry of paraffin-embedded human placenta tissue using CSB-PA010844LA01HU at dilution of 1:100



Immunohistochemistry of paraffin-embedded human kidney tissue using CSB-PA010844LA01HU at dilution of 1:100

## Usage

For Research Use Only. Not for use in diagnostic or therapeutic procedures.