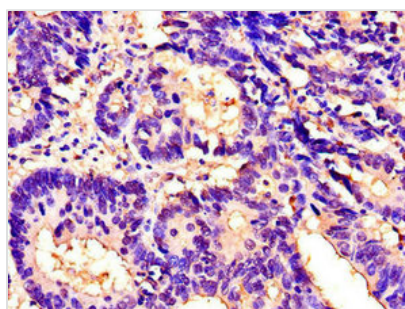




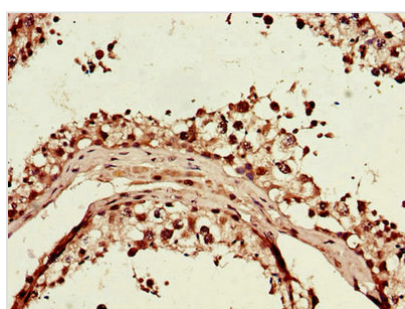
# ITGAM Antibody

|                            |                                                                                                                                                                                                                                 |
|----------------------------|---------------------------------------------------------------------------------------------------------------------------------------------------------------------------------------------------------------------------------|
| <b>Product Code</b>        | CSB-PA011876LA01HU                                                                                                                                                                                                              |
| <b>Storage</b>             | Upon receipt, store at -20°C or -80°C. Avoid repeated freeze.                                                                                                                                                                   |
| <b>Uniprot No.</b>         | P11215                                                                                                                                                                                                                          |
| <b>Immunogen</b>           | Recombinant Human Integrin alpha-M protein (46-150AA)                                                                                                                                                                           |
| <b>Raised In</b>           | Rabbit                                                                                                                                                                                                                          |
| <b>Species Reactivity</b>  | Human                                                                                                                                                                                                                           |
| <b>Tested Applications</b> | ELISA, IHC, IF; Recommended dilution: IHC:1:20-1:200, IF:1:50-1:200                                                                                                                                                             |
| <b>Form</b>                | Liquid                                                                                                                                                                                                                          |
| <b>Conjugate</b>           | Non-conjugated                                                                                                                                                                                                                  |
| <b>Storage Buffer</b>      | Preservative: 0.03% Proclin 300<br>Constituents: 50% Glycerol, 0.01M PBS, PH 7.4                                                                                                                                                |
| <b>Purification Method</b> | >95%, Protein G purified                                                                                                                                                                                                        |
| <b>Isotype</b>             | IgG                                                                                                                                                                                                                             |
| <b>Clonality</b>           | Polyclonal                                                                                                                                                                                                                      |
| <b>Alias</b>               | Integrin alpha-M (CD11 antigen-like family member B) (CR-3 alpha chain) (Cell surface glycoprotein MAC-1 subunit alpha) (Leukocyte adhesion receptor MO1) (Neutrophil adherence receptor) (CD antigen CD11b), ITGAM, CD11B CR3A |
| <b>Immunogen Species</b>   | Homo sapiens (Human)                                                                                                                                                                                                            |
| <b>Research Area</b>       | Signal Transduction                                                                                                                                                                                                             |
| <b>Target Names</b>        | ITGAM                                                                                                                                                                                                                           |

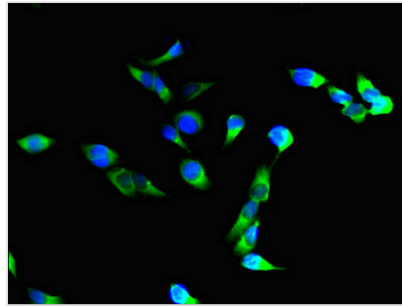
## Image



Immunohistochemistry of paraffin-embedded human colon cancer using CSB-PA011876LA01HU at dilution of 1:100



Immunohistochemistry of paraffin-embedded human testis tissue using CSB-PA011876LA01HU at dilution of 1:100



Immunofluorescent analysis of HeLa cells using CSB-PA011876LA01HU at dilution of 1:100 and Alexa Fluor 488-conjugated AffiniPure Goat Anti-Rabbit IgG(H+L)

---

**Usage**

For Research Use Only. Not for use in diagnostic or therapeutic procedures.