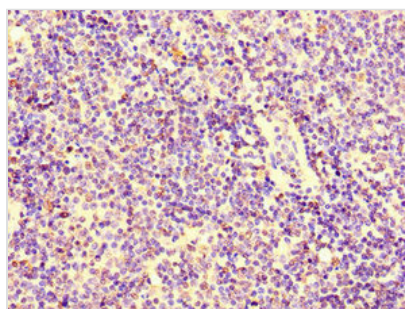




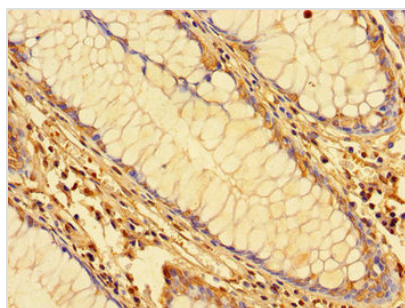
# KPNA2 Antibody

<b>Product Code</b>	CSB-PA012484LA01HU
<b>Storage</b>	Upon receipt, store at -20°C or -80°C. Avoid repeated freeze.
<b>Uniprot No.</b>	P52292
<b>Immunogen</b>	Recombinant Human Importin subunit alpha-1 protein (2-285AA)
<b>Raised In</b>	Rabbit
<b>Species Reactivity</b>	Human
<b>Tested Applications</b>	ELISA, WB, IHC, IF; Recommended dilution: WB:1:500-1:2000, IHC:1:20-1:200, IF:1:50-1:200
<b>Form</b>	Liquid
<b>Conjugate</b>	Non-conjugated
<b>Storage Buffer</b>	Preservative: 0.03% Proclin 300 Constituents: 50% Glycerol, 0.01M PBS, PH 7.4
<b>Purification Method</b>	>95%, Protein G purified
<b>Isotype</b>	IgG
<b>Clonality</b>	Polyclonal
<b>Product Type</b>	Polyclonal Antibody
<b>Immunogen Species</b>	Homo sapiens (Human)
<b>Research Area</b>	Immunology
<b>Target Names</b>	KPNA2

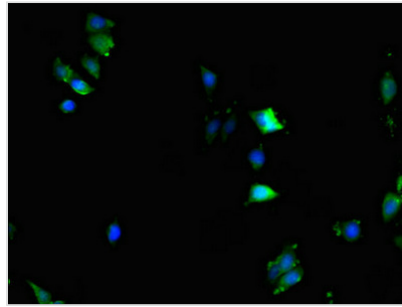
## Image



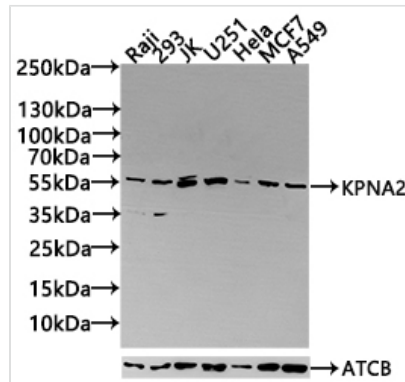
Immunohistochemistry of paraffin-embedded human lymph node tissue using CSB-PA012484LA01HU at dilution of 1:100



Immunohistochemistry of paraffin-embedded human colon tissue using CSB-PA012484LA01HU at dilution of 1:100



Immunofluorescent analysis of HepG2 cells using CSB-PA012484LA01HU at dilution of 1:100 and Alexa Fluor 488-conjugated AffiniPure Goat Anti-Rabbit IgG(H+L)



**Western Blot**

Positive WB detected in: Raji whole cell lysate(30µg), 293 whole cell lysate(30µg), JK whole cell lysate(30µg), U251 whole cell lysate(30µg), HeLa whole cell lysate(30µg), MCF7 whole cell lysate(30µg), A549 whole cell lysate(30µg)  
 All lanes: KPNA2 antibody at 1:1000  
 Secondary  
 Goat polyclonal to rabbit IgG at 1/20000 dilution  
 Predicted band size: 58 kDa  
 Observed band size: 58 kDa  
 Exposure time: 120s

**Usage**

For Research Use Only. Not for use in diagnostic or therapeutic procedures.