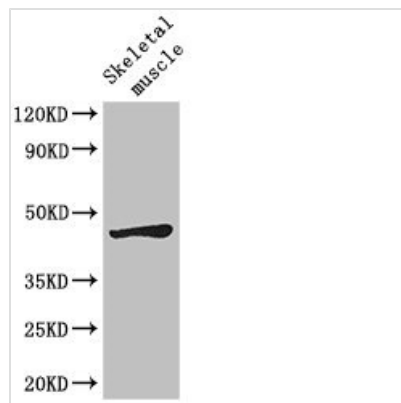




LEF1 Antibody

| | |
|----------------------------|--|
| Product Code | CSB-PA012856LA01HU |
| Storage | Upon receipt, store at -20°C or -80°C. Avoid repeated freeze. |
| Uniprot No. | Q9UJU2 |
| Immunogen | Recombinant Human Lymphoid enhancer-binding factor 1 protein (75-216AA) |
| Raised In | Rabbit |
| Species Reactivity | Human, Mouse |
| Tested Applications | ELISA, WB, IHC, IF; Recommended dilution: WB:1:1000-1:5000, IHC:1:20-1:200, IF:1:50-1:200 |
| Form | Liquid |
| Conjugate | Non-conjugated |
| Storage Buffer | Preservative: 0.03% Proclin 300 Constituents: 50% Glycerol, 0.01M PBS, PH 7.4 |
| Purification Method | >95%, Protein G purified |
| Isotype | IgG |
| Clonality | Polyclonal |
| Alias | Lymphoid enhancer-binding factor 1 (LEF-1) (T cell-specific transcription factor 1-alpha) (TCF1-alpha), LEF1 |
| Immunogen Species | Homo sapiens (Human) |
| Research Area | Epigenetics and Nuclear Signaling |
| Target Names | LEF1 |

Image



Western Blot

Positive WB detected in: Mouse skeletal muscle tissue

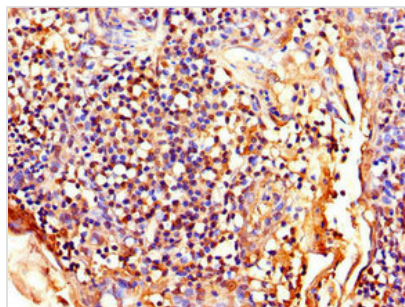
All lanes: LEF1 antibody at 2.7µg/ml

Secondary

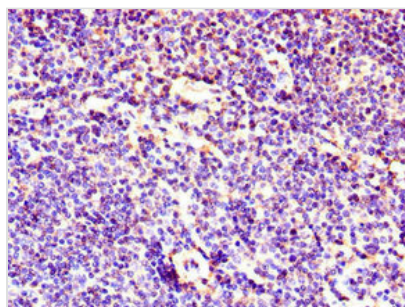
Goat polyclonal to rabbit IgG at 1/50000 dilution

Predicted band size: 45, 36, 32, 24, 42, 43, 35 kDa

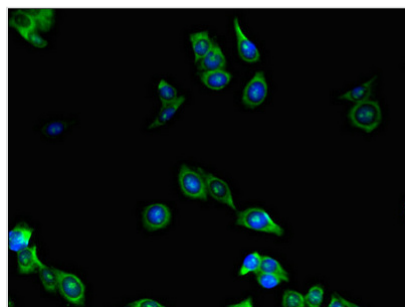
Observed band size: 45 kDa



Immunohistochemistry of paraffin-embedded human tonsil tissue using CSB-PA012856LA01HU at dilution of 1:100



Immunohistochemistry of paraffin-embedded human lymph node tissue using CSB-PA012856LA01HU at dilution of 1:100



Immunofluorescent analysis of HepG2 cells using CSB-PA012856LA01HU at dilution of 1:100 and Alexa Fluor 488-conjugated AffiniPure Goat Anti-Rabbit IgG(H+L)

Usage

For Research Use Only. Not for use in diagnostic or therapeutic procedures.